

Human CGK2 protein, His tag

Cat. No. GTX00173-pro

Application Functional Assay

Species Human

Package

10 µg

APPLICATION

Application Note

Protein Kinase, cGMP Dependent Type II (PRKG2) belong to cGMP-dependent protein kinase or Protein Kinase G (PKG) which is a serine/threonine-specific protein kinase that is activated by cGMP. Two PKG genes, coding for PKG type I (PKG-I) and type II (PKG-II), have been identified in mammals. The PKG-I and PKG-II are homodimers of two identical subunits (~75kDa and ~85kDa, respectively) and share common structural features. PKG phosphorylates a number of biologically important targets and is implicated in the regulation of smooth muscle relaxation, platelet function, sperm metabolism, cell division, and nucleic acid synthesis. Besides, Heat Shock Protein 90kDa Alpha A1 (HSP90aA1) has been identified as an interactor of PRKG2, thus a binding ELISA assay was conducted to detect the interaction of recombinant human PRKG2 and recombinant human HSP90aA1. Briefly, PRKG2 were diluted serially in PBS, with 0.01% BSA (pH 7.4). Duplicate samples of 100 µl were then transferred to HSP90aA1-coated microtiter wells and incubated for 2h at 37°C. Wells were washed with PBST and incubated for 1h with anti-PRKG2 pAb, then aspirated and washed 3 times. After incubation with HRP labelled secondary antibody, wells were aspirated and washed 3 times. With the addition of substrate solution, wells were incubated 15-25 minutes at 37°C. Finally, add 50 µl stop solution to the wells and read at 450nm immediately. The binding activity of PRKG2 and HSP90aA1 was in a dose dependent manner.

Observed MW 62 kDa.

PROPERTIES

Form Lyophilized powder

Buffer Reconstitute with 20mM Tris and 150mM NaCl to 0.1-1.0mg/ml. Do not vortex. Lyophilized from 20mM Tris, 150mM NaCl, 1mM EDTA, 1mM DTT, 0.01% SKL, 5% Trehalose.

Preservative ProClin 300

Storage For short-term storage (1-2 weeks), store at 4°C. For long-term storage, store at -20°C or below. After reconstitution, keep as concentrated solution. Avoid freeze-thaw cycles.

Region/Sequence N-terminal His-Tag; Leu453~Leu728 (NP_001269409.1)

Expression System E. coli

Purity > 90%

Endotoxin < 1 EU/µg

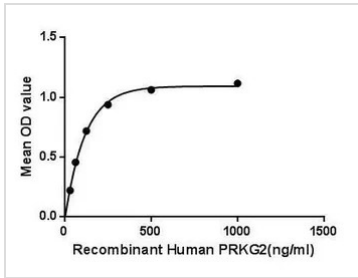
Conjugation Unconjugated

Note For laboratory use only. Not for any clinical, therapeutic, or diagnostic use in humans or animals. Not for animal or human consumption.



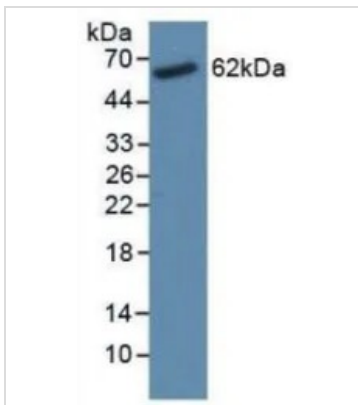
For full product information, images and publications, please visit our [website](#).

DATA IMAGES



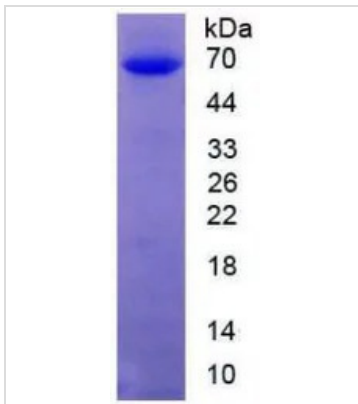
GTX00173-pro Functional Assay Image

Functional ELISA analysis of GTX00173-pro Human CGK2 protein which can bind immobilized HSP90aA1 protein.



GTX00173-pro Image

WB analysis of GTX00173-pro Human CGK2 protein.



GTX00173-pro Image

SDS-PAGE analysis of GTX00173-pro Human CGK2 protein.



For full product information, images and publications, please visit our [website](https://www.genetex.com).