

Human MDM2 protein, His tag

Cat. No. GTX00176-pro

Applications Functional Assay**Species** Human**Package**

10 µg

Applications

Application Note

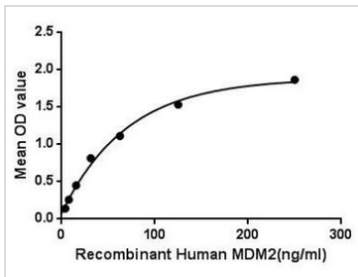
Mouse double minute 2 homolog (MDM2) also known as E3 ubiquitin-protein ligase Mdm2 is a cellular oncoprotein that recognizes the N-terminal trans-activation domain (TAD) of the p53 tumor suppressor and as an inhibitor of p53 transcriptional activation. The human homologue of this protein is sometimes called Hdm2. The p53 tumor suppressor is the key target of MDM2. It has been identified as a p53 interacting protein that represses p53 transcriptional activity and also acts as an E3 ubiquitin ligase, targeting both itself and p53 for degradation by the proteasome. MDM2 is capable of auto-polyubiquitination, and in complex with p300, a cooperating E3 ubiquitin ligase, is capable of polyubiquitinating p53. Besides, S100 Calcium Binding Protein (S100) has been identified as an interactor of MDM2, thus a binding ELISA assay was conducted to detect the interaction of recombinant human MDM2 and recombinant human S100. Briefly, MDM2 were diluted serially in PBS, with 0.01% BSA (pH 7.4). Duplicate samples of 100 µl were then transferred to S100-coated microtiter wells and incubated for 2h at 37°C. Wells were washed with PBST and incubated for 1h with anti-MDM2 pAb, then aspirated and washed 3 times. After incubation with HRP labelled secondary antibody, wells were aspirated and washed 3 times. With the addition of substrate solution, wells were incubated 15-25 minutes at 37°C. Finally, add 50 µl stop solution to the wells and read at 450nm immediately. The binding activity of MDM2 and S100 was in a dose dependent manner.

Observed MW (kDa) 44 kDa.

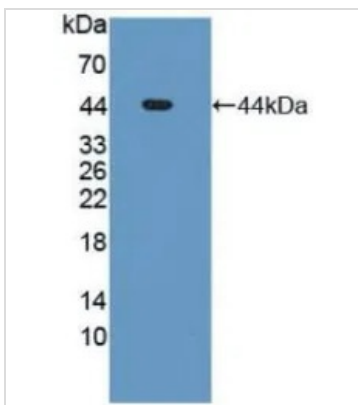
Properties

Form Lyophilized powder**Buffer** Reconstitute with 20mM Tris and 150mM NaCl to 0.1-1.0mg/ml. Do not vortex. Lyophilized from 20mM Tris, 150mM NaCl, 1mM EDTA, 1mM DTT, 0.01% SKL, 5% Trehalose.**Preservative** ProClin 300**Storage** For short-term storage (1-2 weeks), store at 4°C. For long-term storage, store at -20°C or below. After reconstitution, keep as concentrated solution. Avoid freeze-thaw cycles.**Region/Sequence** N-terminal His-Tag; Met1~Pro218 (NP_001138811.1)**Expression System** E. coli**Purity** > 95%**Endotoxin** < 1 EU/µg**Conjugation** Unconjugated**Note** For laboratory use only. Not for any clinical, therapeutic, or diagnostic use in humans or animals. Not for animal or human consumption.

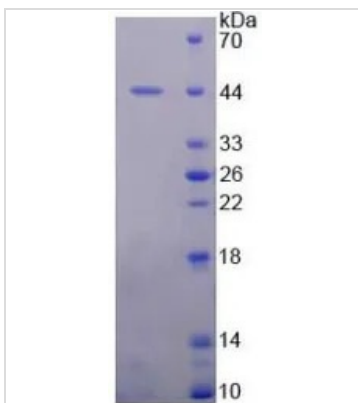
For full product information, images and publications, please visit our [website](#).

DATA IMAGES

GTx00176-pro Functional Assay Image

Functional ELISA analysis of GTx00176-pro Human MDM2 protein which can bind immobilized S100 protein.


GTx00176-pro Image

WB analysis of GTx00176-pro Human MDM2 protein.


GTx00176-pro Image

SDS-PAGE analysis of GTx00176-pro Human MDM2 protein.



For full product information, images and publications, please visit our [website](https://www.genetex.com).