

# Human CD66e protein, His tag

**Cat. No. GTX00181-pro**

<b>Application</b>	Functional Assay
<b>Species</b>	Human

**Package**  
10 µg

## APPLICATION

### Application Note

Carcinoembryonic antigen (CEA) which are characterized as members of the CD66 cluster of differentiation have highly related glycoproteins involved in cell adhesion. It also can be used as a tumor marker in clinical tests. CEA are glycosyl phosphatidyl inositol (GPI) cell-surface-anchored glycoproteins whose specialized sialofucosylated glycoforms serve as functional colon carcinoma L-selectin and E-selectin ligands. Besides, Galectin 4 (GAL4) has been identified as an interactor of CEA, thus a binding ELISA assay was conducted to detect the interaction of recombinant human CEA and recombinant human GLA4. Briefly, CEA were diluted serially in PBS, with 0.01% BSA (pH 7.4). Duplicate samples of 100 µl were then transferred to GLA4-coated microtiter wells and incubated for 2h at 37°C. Wells were washed with PBST and incubated for 1h with anti-CEA pAb, then aspirated and washed 3 times. After incubation with HRP labelled secondary antibody, wells were aspirated and washed 3 times. With the addition of substrate solution, wells were incubated 15-25 minutes at 37°C. Finally, add 50 µl stop solution to the wells and read at 450nm immediately. The binding activity of CEA and GLA4 was in a dose dependent manner.

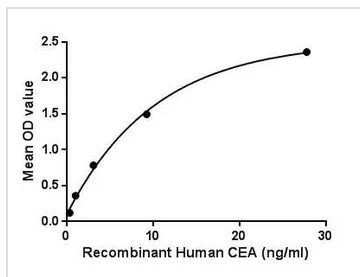
**Observed MW** 16/25 kDa.

## PROPERTIES

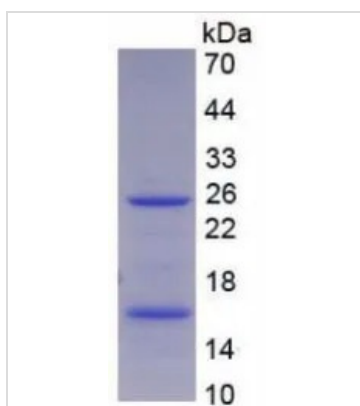
<b>Form</b>	Lyophilized powder
<b>Buffer</b>	Reconstitute with 20mM Tris and 150mM NaCl to 0.1-1.0mg/ml. Do not vortex. Lyophilized from 20mM Tris, 150mM NaCl, 1mM EDTA, 1mM DTT, 0.01% SKL, 5% Trehalose.
<b>Preservative</b>	ProClin 300
<b>Storage</b>	For short-term storage (1-2 weeks), store at 4°C. For long-term storage, store at -20°C or below. After reconstitution, keep as concentrated solution. Avoid freeze-thaw cycles.
<b>Region/Sequence</b>	N-terminal His-Tag; Ala566~Gly698 (NP_001278413.1)
<b>Expression System</b>	E. coli
<b>Purity</b>	> 97%
<b>Endotoxin</b>	< 1 EU/µg
<b>Conjugation</b>	Unconjugated
<b>Note</b>	For laboratory use only. Not for any clinical, therapeutic, or diagnostic use in humans or animals. Not for animal or human consumption.



For full product information, images and publications, please visit our [website](#).

**DATA IMAGES**

**GTX00181-pro Functional Assay Image**

Functional ELISA analysis of GTX00181-pro Human CD66e protein which can bind immobilized GLA4 protein.


**GTX00181-pro Image**

SDS-PAGE analysis of GTX00181-pro Human CD66e protein.



For full product information, images and publications, please visit our [website](https://www.genetex.com).