

## Human CD66e protein, His tag

Cat. No. GTX00182-pro

Application	Functional Assay
Species	Human

Package  
10 µg

## APPLICATION

## Application Note

Carcinoembryonic antigen (CEA) describes a set of highly related glycoproteins involved in cell adhesion. CEA is normally produced in gastrointestinal tissue during fetal development, but the production stops before birth. CEA are glycosyl phosphatidyl inositol (GPI) cell-surface-anchored glycoproteins whose specialized sialofucosylated glycoforms serve as functional colon carcinoma L-selectin and E-selectin ligands. CEA levels are raised in some types of cancer, which means that it can be used as a tumor marker in clinical tests. Besides, Carcinoembryonic Antigen Related Cell Adhesion Molecule 6 (CEACAM6) has been identified as an interactor of CEA, thus a binding ELISA assay was conducted to detect the interaction of recombinant human CEA and recombinant human CEACAM6. Briefly, CEA were diluted serially in PBS with 0.01% BSA (pH 7.4). Duplicate samples of 100 µl were then transferred to CEACAM6-coated microtiter wells and incubated for 2h at 37°C. Wells were washed with PBST and incubated for 1h with anti-CEA pAb, then aspirated and washed 3 times. After incubation with HRP labelled secondary antibody, wells were aspirated and washed 3 times. With the addition of substrate solution, wells were incubated 15-25 minutes at 37°C. Finally, add 50 µl stop solution to the wells and read at 450nm immediately. The binding activity of CEA and CEACAM6 was in a dose dependent manner.

Observed MW 14 kDa.

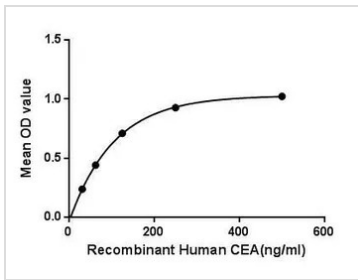
## PROPERTIES

Form	Lyophilized powder
Buffer	Reconstitute with 20mM Tris and 150mM NaCl to 0.1-1.0mg/ml. Do not vortex. Lyophilized from 20mM Tris, 150mM NaCl, 1mM EDTA, 1mM DTT, 0.01% SKL, 5% Trehalose.
Preservative	ProClin 300
Storage	For short-term storage (1-2 weeks), store at 4°C. For long-term storage, store at -20°C or below. After reconstitution, keep as concentrated solution. Avoid freeze-thaw cycles.
Region/Sequence	N-terminal His-Tag; Ser448~Gly572 (NP_001278413.1)
Expression System	E. coli
Purity	> 95%
Endotoxin	< 1 EU/µg
Conjugation	Unconjugated
Note	For laboratory use only. Not for any clinical, therapeutic, or diagnostic use in humans or animals. Not for animal or human consumption.



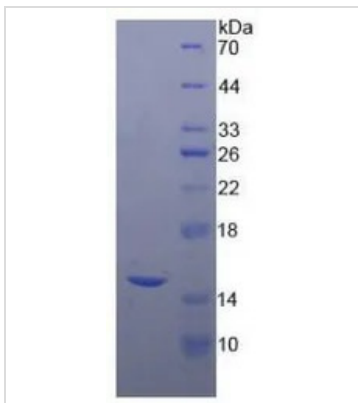
For full product information, images and publications, please visit our [website](#).

## DATA IMAGES



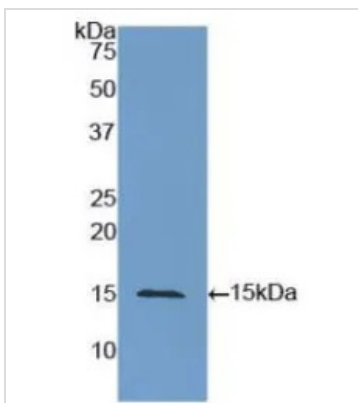
### GTX00182-pro Functional Assay Image

Functional ELISA analysis of GTX00182-pro Human CD66e protein which can bind immobilized CEACAM6 protein.



### GTX00182-pro Image

SDS-PAGE analysis of GTX00182-pro Human CD66e protein.



### GTX00182-pro Image

WB analysis of GTX00182-pro Human CD66e protein.



For full product information, images and publications, please visit our [website](https://www.genetex.com).