

Human CD26 protein, His tag

Cat. No. GTX00187-pro

Applications Functional Assay**Species** Human**Package**

10 µg

Applications

Application Note

Dipeptidyl peptidase-4 (DPP4), also known as adenosine deaminase complexing protein 2 or cluster of differentiation 26 (CD26), is a protein in humans. DPP4 is an antigenic enzyme expressed on the surface of most cell types and is associated with immune regulation, signal transduction and apoptosis. It is an intrinsic membrane glycoprotein and a serine exopeptidase that cleaves X-proline dipeptides from the N-terminus of polypeptides. Besides, Eosinophil Chemotactic Factor (ECF) has been identified as an interactor of DPP4, thus a binding ELISA assay was conducted to detect the interaction of recombinant human DPP4 and recombinant human ECF. Briefly, DPP4 were diluted serially in PBS, with 0.01% BSA (pH 7.4). Duplicate samples of 100 µl were then transferred to ECF-coated microtiter wells and incubated for 2h at 37°C. Wells were washed with PBST and incubated for 1h with anti-DPP4 pAb, then aspirated and washed 3 times. After incubation with HRP labelled secondary antibody, wells were aspirated and washed 3 times. With the addition of substrate solution, wells were incubated 15-25 minutes at 37°C. Finally, add 50 µl stop solution to the wells and read at 450nm immediately. The binding activity of DPP4 and ECF was in a dose dependent manner.

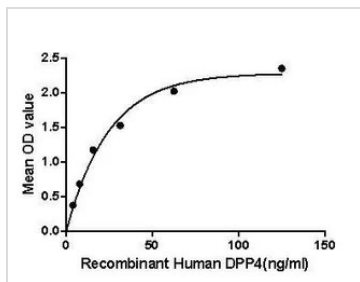
Observed MW (kDa) 29 kDa.

Properties

Form Lyophilized powder**Buffer** Reconstitute with 20mM Tris and 150mM NaCl to 0.1-1.0mg/ml. Do not vortex. Lyophilized from 20mM Tris, 150mM NaCl, 1mM EDTA, 1mM DTT, 0.01% SKL, 5% Trehalose.**Preservative** ProClin 300**Storage** For short-term storage (1-2 weeks), store at 4°C. For long-term storage, store at -20°C or below. After reconstitution, keep as concentrated solution. Avoid freeze-thaw cycles.**Region/Sequence** N-terminal His-Tag; Ser484~Val728 (NP_001926.2)**Expression System** E. coli**Purity** > 90%**Endotoxin** < 1 EU/µg**Conjugation** Unconjugated**Note** For laboratory use only. Not for any clinical, therapeutic, or diagnostic use in humans or animals. Not for animal or human consumption.

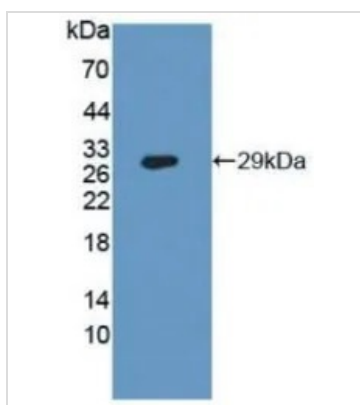
For full product information, images and publications, please visit our [website](#).

DATA IMAGES



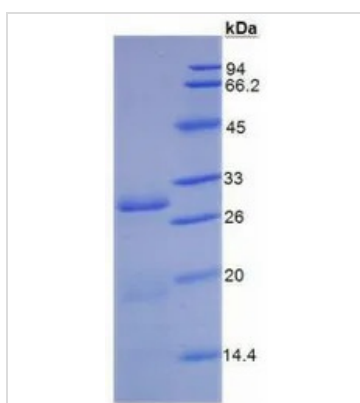
GTX00187-pro Functional Assay Image

Functional ELISA analysis of GTX00187-pro Human CD26 protein which can bind immobilized ECF protein.



GTX00187-pro Image

WB analysis of GTX00187-pro Human CD26 protein.



GTX00187-pro Image

SDS-PAGE analysis of GTX00187-pro Human CD26 protein.



For full product information, images and publications, please visit our [website](https://www.genetex.com).