

Human MIP3 alpha protein, His tag

Cat. No. GTX00192-pro

Applications Functional Assay**Species** Human**Package**

10 µg

Applications

Application Note

Macrophage Inflammatory Protein 3 Alpha (MIP3a) also known as Chemokine (C-C motif) ligand 20 (CCL20) or liver activation regulated chemokine (LARC) is a small cytokine belonging to the CC chemokine family. It is strongly chemotactic for lymphocytes and weakly attracts neutrophils. MIP3a is implicated in the formation and function of mucosal lymphoid tissues via chemoattraction of lymphocytes and dendritic cells towards the epithelial cells surrounding these tissues. It is expressed in several tissues such as peripheral blood lymphocytes, lymph nodes, liver, appendix, fetal lung. Expression of MIP3a can be induced by microbial factors such as lipopolysaccharide (LPS), and inflammatory cytokines such as tumor necrosis factor and interferon- γ , and down-regulated by IL-10. Besides, Transforming Growth Factor Beta 3 (TGFb3) has been identified as an interactor of MIP3a, thus a binding ELISA assay was conducted to detect the interaction of recombinant human MIP3a and recombinant human TGFb3. Briefly, MIP3a were diluted serially in PBS, with 0.01% BSA (pH 7.4). Duplicate samples of 100 µl were then transferred to TGFb3-coated microtiter wells and incubated for 2h at 37°C. Wells were washed with PBST and incubated for 1h with anti-MIP3a pAb, then aspirated and washed 3 times. After incubation with HRP labelled secondary antibody, wells were aspirated and washed 3 times. With the addition of substrate solution, wells were incubated 15-25 minutes at 37°C. Finally, add 50 µl stop solution to the wells and read at 450nm immediately. The binding activity of MIP3a and TGFb3 was in a dose dependent manner.

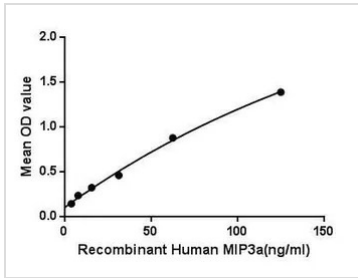
Observed MW (kDa) 13 kDa.

Properties

Form Lyophilized powder**Buffer** Reconstitute with 10mM PBS (pH7.4) to 0.1-1.0mg/ml. Do not vortex. Lyophilized from PBS (pH7.4), 0.01% SKL, 1mM DTT, 5% Trehalose.**Preservative** ProClin 300**Storage** For short-term storage (1-2 weeks), store at 4°C. For long-term storage, store at -20°C or below. After reconstitution, keep as concentrated solution. Avoid freeze-thaw cycles.**Region/Sequence** N-terminal His-Tag; Ala27~Met96 (NP_001123518.1)**Expression System** E. coli**Purity** > 95%**Endotoxin** < 1 EU/µg**Conjugation** Unconjugated**Note** For laboratory use only. Not for any clinical, therapeutic, or diagnostic use in humans or animals. Not for animal or human consumption.

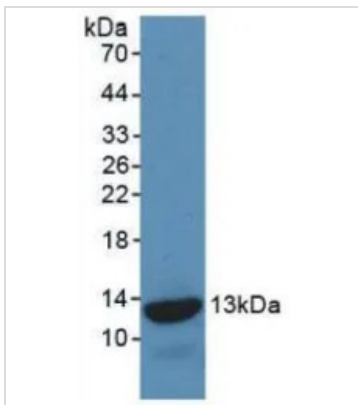
For full product information, images and publications, please visit our [website](#).

DATA IMAGES



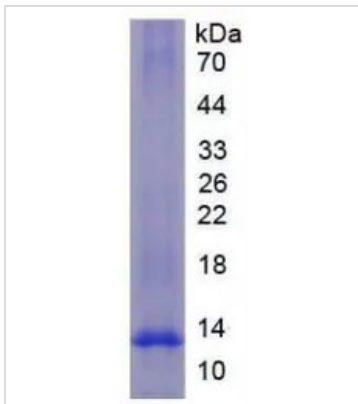
GTX00192-pro Functional Assay Image

Functional ELISA analysis of GTX00192-pro Human MIP3 alpha protein which can bind immobilized TGFb3 protein.



GTX00192-pro Image

WB analysis of GTX00192-pro Human MIP3 alpha protein.



GTX00192-pro Image

SDS-PAGE analysis of GTX00192-pro Human MIP3 alpha protein.



For full product information, images and publications, please visit our [website](https://www.genetex.com).