

Human Cytochrome P450 2D6 protein, His tag

Cat. No. GTX00199-pro

Applications Functional Assay**Species** Human**Package**

10 µg

Applications

Application Note

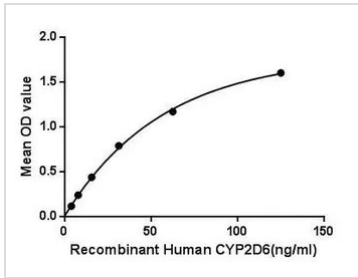
Cytochrome P450 2D6 (CYP2D6), a member of the cytochrome P450 mixed-function oxidase system, is one of the most important enzymes involved in the metabolism of xenobiotics in the body. In particular, CYP2D6 is responsible for the metabolism and elimination of approximately 25% of clinically used drugs, via the addition or removal of certain functional groups-specifically, hydroxylation, demethylation, and dealkylation. CYP2D6 is primarily expressed in the liver. It is also highly expressed in areas of the central nervous system, including the substantia nigra. This enzyme also metabolizes several endogenous substances, such as hydroxytryptamines, neurosteroids, and both m-tyramine and p-tyramine which CYP2D6 metabolizes into dopamine in the brain and liver. Besides, Cytochrome P450 Reductase (CPR) has been identified as an interactor of CYP2D6, thus a binding ELISA assay was conducted to detect the interaction of recombinant human VDR and recombinant human CPR. Briefly, CYP2D6 were diluted serially in PBS, with 0.01% BSA (pH 7.4). Duplicate samples of 100 µl were then transferred to CPR-coated microtiter wells and incubated for 2h at 37°C. Wells were washed with PBST and incubated for 1h with anti-CYP2D6 pAb, then aspirated and washed 3 times. After incubation with HRP labelled secondary antibody, wells were aspirated and washed 3 times. With the addition of substrate solution, wells were incubated 15-25 minutes at 37°C. Finally, add 50 µl stop solution to the wells and read at 450nm immediately. The binding activity of CYP2D6 and CPR was in a dose dependent manner.

Observed MW (kDa) 27 kDa.

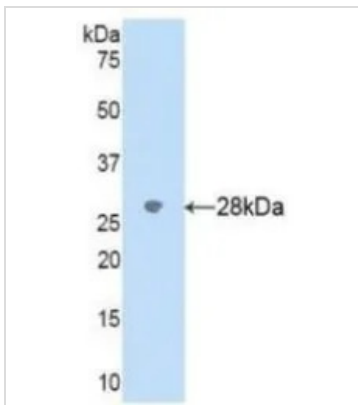
Properties

Form Lyophilized powder**Buffer** Reconstitute with 20mM Tris and 150mM NaCl to 0.1-1.0mg/ml. Do not vortex. Lyophilized from 20mM Tris, 150mM NaCl, 1mM EDTA, 1mM DTT, 0.01% SKL, 5% Trehalose.**Preservative** ProClin 300**Storage** For short-term storage (1-2 weeks), store at 4°C. For long-term storage, store at -20°C or below. After reconstitution, keep as concentrated solution. Avoid freeze-thaw cycles.**Region/Sequence** N-terminal His-Tag; Leu236~Gln472 (NP_000097.3)**Expression System** E. coli**Purity** > 95%**Endotoxin** < 1 EU/µg**Conjugation** Unconjugated**Note** For laboratory use only. Not for any clinical, therapeutic, or diagnostic use in humans or animals. Not for animal or human consumption.

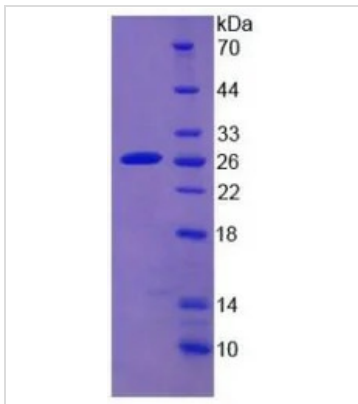
For full product information, images and publications, please visit our [website](#).

DATA IMAGES

GTx00199-pro Functional Assay Image

Functional ELISA analysis of GTx00199-pro Human Cytochrome P450 2D6 protein which can bind immobilized CPR protein.


GTx00199-pro Image

WB analysis of GTx00199-pro Human Cytochrome P450 2D6 protein.


GTx00199-pro Image

SDS-PAGE analysis of GTx00199-pro Human Cytochrome P450 2D6 protein.



For full product information, images and publications, please visit our [website](https://www.genetex.com).