

Human LIF protein, His tag (active)

Cat. No. GTX00201-pro

Applications Functional Assay**Species** Human**Package**

10 µg

Applications

Application Note

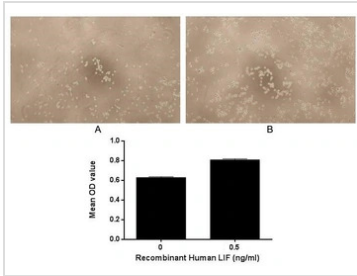
Leukemia Inhibitory Factor (LIF), is an interleukin 6 class cytokine that affects cell growth by inhibiting differentiation. Other properties attributed to the cytokine include: the growth promotion and cell differentiation of different types of target cells, influence on bone metabolism, cachexia, neural development, embryogenesis and inflammation. p53 regulated LIF has been shown to facilitate implantation in the mouse model and possibly in humans. To test the effect of LIF on cell proliferation, TF-1 cells were seeded into triplicate wells of 96-well plates at a density of 5000 cells/well with 1% serum standard RPMI-1640 including various concentrations of recombinant human LIF. After incubated for 72h, cells were observed by inverted microscope and cell proliferation was measured by Cell Counting Kit-8 (CCK-8). Briefly, 10 µl of CCK-8 solution was added to each well of the plate, then the absorbance at 450nm was measured using a microplate reader after incubating the plate for 1-4 hours at 37°C. Proliferation of TF-1 cells after incubation with LIF for 72h observed by inverted microscope.

Observed MW (kDa) 26 kDa.

Properties

Form Lyophilized powder**Buffer** Reconstitute with 20mM Tris and 150mM NaCl to 0.1-1.0mg/ml. Do not vortex. Lyophilized from 20mM Tris, 150mM NaCl, 1mM EDTA, 1mM DTT, 0.01% SKL, 5% Trehalose.**Preservative** ProClin 300**Storage** For short-term storage (1-2 weeks), store at 4°C. For long-term storage, store at -20°C or below. After reconstitution, keep as concentrated solution. Avoid freeze-thaw cycles.**Region/Sequence** N-terminal His-Tag; Lys2~Ala201 (NP_001244064.1)**Expression System** E. coli**Purity** > 95%**Endotoxin** < 1 EU/µg**Conjugation** Unconjugated**Note** For laboratory use only. Not for any clinical, therapeutic, or diagnostic use in humans or animals. Not for animal or human consumption.

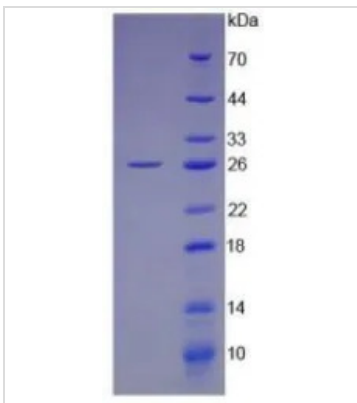
For full product information, images and publications, please visit our [website](#).

DATA IMAGES

GTX00201-pro Functional Assay Image

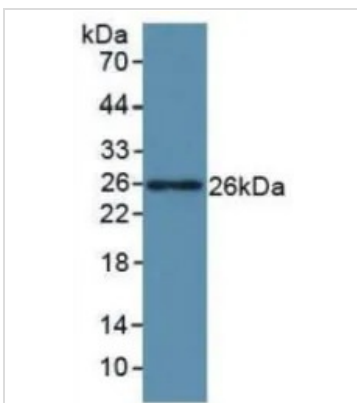
Cell proliferation effect of GTX00201-pro Human LIF protein (active). Cell viability was measured by Cell Counting Kit-8 (CCK-8).

(A) Unstimulated TF-1 cells cultured in RPMI-1640 for 72hrs.

(B) TF-1 cells cultured in RPMI-1640, stimulated with 0.5 ng/ml LIF for 72hrs.


GTX00201-pro Image

SDS-PAGE analysis of GTX00201-pro Human LIF protein (active).


GTX00201-pro Image

WB analysis of GTX00201-pro Human LIF protein (active).



For full product information, images and publications, please visit our [website](https://www.genetex.com).