

Human CXCL1 / GRO alpha protein, His and GST tag (active)

Cat. No. GTX00215-pro

Applications Functional Assay**Species** Human**Package**

10 µg

Applications

Application Note

Neutrophil-activating protein 3 (NAP3) also known as chemokine (C-X-C motif) ligand 1 (CXCL1) is a small cytokine belonging to the CXC chemokine family. NAP3 is expressed by macrophages, neutrophils and epithelial cells, and has neutrophil chemoattractant activity. Thus, chemotaxis assay used 24-well microchemotaxis system was undertaken to detect the chemotactic effect of NAP3 on the human monocytic cell line THP-1. Briefly, THP-1 cells were seeded into the upper chambers (100 µl cell suspension, 1x10⁶ cells/ml in RPMI-1640 with FBS free) and SLC (31. 25 ng/ml, 62. 5 ng/ml, 125 ng/ml and 250 ng/ml diluted separately in serum free RPMI-1640) was added in lower chamber with a polycarbonate filter (8µm pore size) used to separate the two compartments. After incubation at 37°C with 5% CO₂ for 1h, the filter was removed, then cells in low chamber were observed by inverted microscope at low magnification (×100) and the number of migrated cells were counted at high magnification (×400) randomly. And NAP3 is able to induce migration of THP-1 cells.

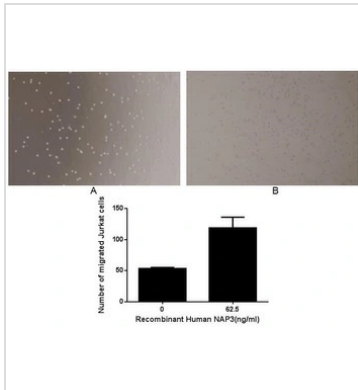
Observed MW (kDa) 40 kDa.

Properties

Form Lyophilized powder**Buffer** Reconstitute with 20mM Tris and 150mM NaCl to 0.1-1.0mg/ml. Do not vortex. Lyophilized from 20mM Tris, 150mM NaCl, 1mM EDTA, 1mM DTT, 0.01% SKL, 5% Trehalose.**Preservative** ProClin 300**Storage** For short-term storage (1-2 weeks), store at 4°C. For long-term storage, store at -20°C or below. After reconstitution, keep as concentrated solution. Avoid freeze-thaw cycles.**Region/Sequence** N-terminal His and GST-Tag; Ala35~Asn107 (NP_001502.1)**Expression System** E. coli**Purity** > 97%**Endotoxin** < 1 EU/µg**Conjugation** Unconjugated**Note** For laboratory use only. Not for any clinical, therapeutic, or diagnostic use in humans or animals. Not for animal or human consumption.

For full product information, images and publications, please visit our [website](#).

DATA IMAGES



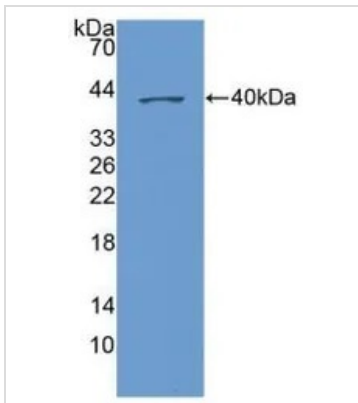
GTx00215-pro Functional Assay Image

The chemotactic effect of GTx00215-pro Human CXCL1 / GRO alpha protein (active).

Upper: (A) THP-1 cells were seeded into the upper chambers and serum free RPMI-1640 without NAP3 was added in lower chamber, then cells in lower chamber were observed at low magnification ($\times 100$) after incubation for 1hr.

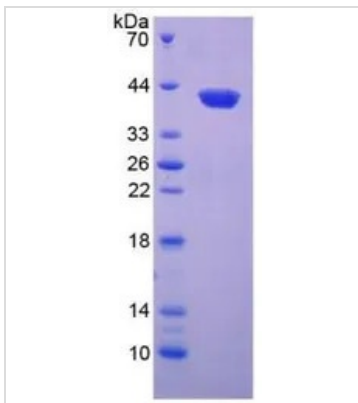
(B) THP-1 cells were seeded into the upper chambers and serum free RPMI-1640 with 62.5 ng/ml NAP3 was added in lower chamber, then cells in lower chamber were observed at low magnification ($\times 100$) after incubation for 1hr.

Lower: The number of migrated cells were counted at high magnification ($\times 400$) randomly (five fields for each filter).



GTx00215-pro Image

WB analysis of GTx00215-pro Human CXCL1 / GRO alpha protein (active).



GTx00215-pro Image

SDS-PAGE analysis of GTx00215-pro Human CXCL1 / GRO alpha protein (active).



For full product information, images and publications, please visit our [website](http://www.genetex.com).