

## Human Apolipoprotein A1 protein, His tag

Cat. No. GTX00221-pro

**Applications** Functional Assay**Species** Human**Package**

10 µg

## Applications

## Application Note

Apolipoprotein A1 (APOA1) is the major protein component of HDL particles in plasma. It is a cofactor for lecithin cholesterolacyltransferase (LCAT) which is responsible for the formation of most plasma cholesteryl esters. ApoA1 was also isolated as a prostacyclin (PGI<sub>2</sub>) stabilizing factor, and thus may have an anticlotting effect. ApoA1 is often used as a biomarker for prediction of cardiovascular diseases. Besides, Haptoglobin (Hpt) has been identified as an interactor of APOA1, thus a binding ELISA assay was conducted to detect the interaction of recombinant human APOA1 and recombinant human Hpt. Briefly, APOA1 were diluted serially in PBS, with 0.01% BSA (pH 7.4). Duplicate samples of 100 µl were then transferred to Hpt-coated microtiter wells and incubated for 2h at 37°C. Wells were washed with PBST and incubated for 1h with anti-APOA1 pAb, then aspirated and washed 3 times. After incubation with HRP labelled secondary antibody, wells were aspirated and washed 3 times. With the addition of substrate solution, wells were incubated 15-25 minutes at 37°C. Finally, add 50 µl stop solution to the wells and read at 450nm immediately. The binding activity of APOA1 and Hpt was in a dose dependent manner.

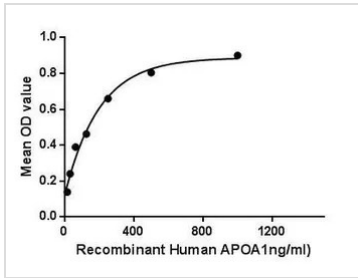
**Observed MW (kDa)** 17 kDa.

## Properties

**Form** Lyophilized powder**Buffer** Reconstitute with 20mM Tris and 150mM NaCl to 0.1-1.0mg/ml. Do not vortex. Lyophilized from 20mM Tris, 150mM NaCl, 1mM EDTA, 1mM DTT, 0.01% SKL, 5% Trehalose.**Preservative** ProClin 300**Storage** For short-term storage (1-2 weeks), store at 4°C. For long-term storage, store at -20°C or below. After reconstitution, keep as concentrated solution. Avoid freeze-thaw cycles.**Region/Sequence** N-terminal His-Tag; Gln122~Gln267 (NP\_000030.1)**Expression System** E. coli**Purity** > 95%**Endotoxin** < 1 EU/µg**Conjugation** Unconjugated**Note** For laboratory use only. Not for any clinical, therapeutic, or diagnostic use in humans or animals. Not for animal or human consumption.

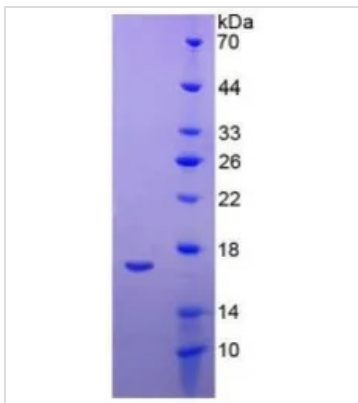
For full product information, images and publications, please visit our [website](#).

## DATA IMAGES



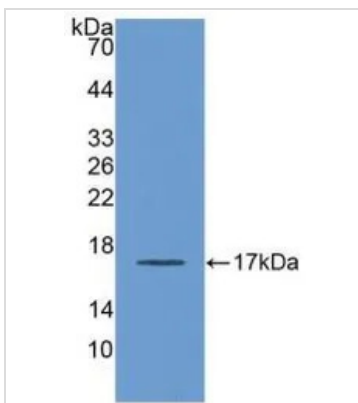
### GTX00221-pro Functional Assay Image

Functional ELISA analysis of GTX00221-pro Human Apolipoprotein A1 protein which can bind immobilized Hpt protein.



### GTX00221-pro Image

SDS-PAGE analysis of GTX00221-pro Human Apolipoprotein A1 protein.



### GTX00221-pro Image

WB analysis of GTX00221-pro Human Apolipoprotein A1 protein.



For full product information, images and publications, please visit our [website](https://www.genetex.com).