

Human NPEPPS protein, His tag

Cat. No. GTX00222-pro**Applications** Functional Assay**Species** Human**Package**

10 µg

Applications

Application Note

Puromycin Sensitive Aminopeptidase (PSA) also known as cytosol alanyl aminopeptidase or alanine aminopeptidase (AAP) is used as a biomarker to detect damage to the kidneys, and that may be used to help diagnose certain kidney disorders. It is found at high levels in the urine when there are kidney problems. PSA has been proposed to function in a variety of processes, including metabolism of neuropeptide, regulation of the cell cycle, and hydrolysis of proteasomal products to amino acids. Besides, Protein Disulfide Isomerase A3 (PDIA3) has been identified as an interactor of PSA, thus a binding ELISA assay was conducted to detect the interaction of recombinant human PSA and recombinant human PDIA3. Briefly, PSA were diluted serially in PBS, with 0.01% BSA (pH 7.4). Duplicate samples of 100 µl were then transferred to PDIA3-coated microtiter wells and incubated for 2h at 37°C. Wells were washed with PBST and incubated for 1h with anti-PSA pAb, then aspirated and washed 3 times. After incubation with HRP labelled secondary antibody, wells were aspirated and washed 3 times. With the addition of substrate solution, wells were incubated 15-25 minutes at 37°C. Finally, add 50 µl stop solution to the wells and read at 450nm immediately. The binding activity of PSA and PDIA3 was in a dose dependent manner.

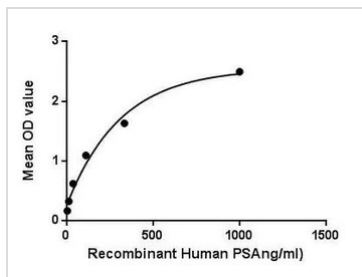
Observed MW (kDa) 25 kDa.

Properties

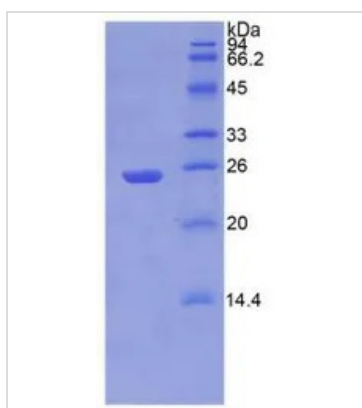
Form Lyophilized powder**Buffer** Reconstitute with 20mM Tris and 150mM NaCl to 0.1-1.0mg/ml. Do not vortex. Lyophilized from 20mM Tris, 150mM NaCl, 1mM EDTA, 1mM DTT, 0.01% SKL, 5% Trehalose.**Preservative** ProClin 300**Storage** For short-term storage (1-2 weeks), store at 4°C. For long-term storage, store at -20°C or below. After reconstitution, keep as concentrated solution. Avoid freeze-thaw cycles.**Region/Sequence** N-terminal His-Tag; Gly584~Gln793 (NP_001317186.1)**Expression System** E. coli**Purity** > 90%**Endotoxin** < 1 EU/µg**Conjugation** Unconjugated**Note** For laboratory use only. Not for any clinical, therapeutic, or diagnostic use in humans or animals. Not for animal or human consumption.

For full product information, images and publications, please visit our [website](#).

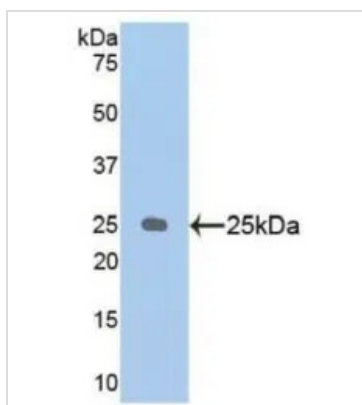
DATA IMAGES

**GTX00222-pro Functional Assay Image**

Functional ELISA analysis of GTX00222-pro Human NPEPPS protein which can bind immobilized PDIA3 protein.

**GTX00222-pro Image**

SDS-PAGE analysis of GTX00222-pro Human NPEPPS protein.

**GTX00222-pro Image**

WB analysis of GTX00222-pro Human NPEPPS protein.



For full product information, images and publications, please visit our [website](#).