

## Human Syk protein, His tag

Cat. No. GTX00233-pro

**Applications** Functional Assay**Species** Human**Package**

10 µg

## Applications

## Application Note

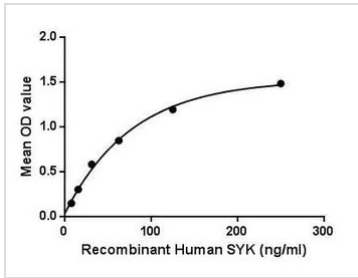
Spleen Tyrosine Kinase (SYK) is a member of the SYK family of tyrosine kinases. These non-receptor cytoplasmic tyrosine kinases share a characteristic dual SH2 domain separated by a linker domain. Within B and T cells respectively, SYK and Zap-70 transmit signals from the B-Cell receptor and T-Cell receptor. SYK plays a similar role in transmitting signals from a variety of cell surface receptors including CD74, Fc Receptor, and integrins. Besides, Sialic Acid Binding Ig Like Lectin 1 (SIGLEC2) has been identified as an interactor of SYK, thus a binding ELISA assay was conducted to detect the interaction of recombinant human SYK and recombinant human SIGLEC2. Briefly, SYK were diluted serially in PBS, with 0.01% BSA (pH 7.4). Duplicate samples of 100 µl were then transferred to SIGLEC2-coated microtiter wells and incubated for 2h at 37°C. Wells were washed with PBST and incubated for 1h with anti-SYK pAb, then aspirated and washed 3 times. After incubation with HRP labelled secondary antibody, wells were aspirated and washed 3 times. With the addition of substrate solution, wells were incubated 15-25 minutes at 37°C. Finally, add 50 µl stop solution to the wells and read at 450nm immediately. The binding activity of SYK and SIGLEC2 was in a dose dependent manner.

**Observed MW (kDa)** 34 kDa.

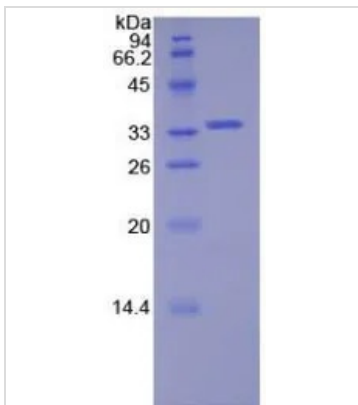
## Properties

**Form** Lyophilized powder**Buffer** Reconstitute with 20mM Tris and 150mM NaCl to 0.1-1.0mg/ml. Do not vortex. Lyophilized from 20mM Tris, 150mM NaCl, 1mM EDTA, 1mM DTT, 0.01% SKL, 5% Trehalose.**Preservative** ProClin 300**Storage** For short-term storage (1-2 weeks), store at 4°C. For long-term storage, store at -20°C or below. After reconstitution, keep as concentrated solution. Avoid freeze-thaw cycles.**Region/Sequence** N-terminal His-Tag; Asp374~Asn635 (NP\_001128524.1)**Expression System** E. coli**Purity** > 95%**Endotoxin** < 1 EU/µg**Conjugation** Unconjugated**Note** For laboratory use only. Not for any clinical, therapeutic, or diagnostic use in humans or animals. Not for animal or human consumption.

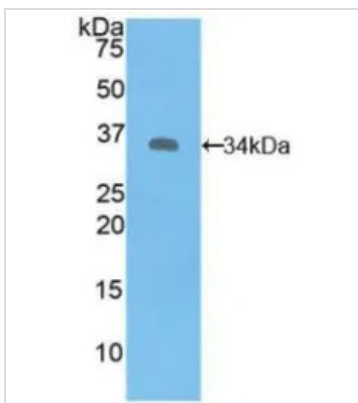
For full product information, images and publications, please visit our [website](#).

**DATA IMAGES**

**GTx00233-pro Functional Assay Image**

Functional ELISA analysis of GTx00233-pro Human Syk protein which can bind immobilized SIGLEC2 protein.


**GTx00233-pro Image**

SDS-PAGE analysis of GTx00233-pro Human Syk protein.


**GTx00233-pro Image**

WB analysis of GTx00233-pro Human Syk protein.



For full product information, images and publications, please visit our [website](https://www.genetex.com).