

# Human RPP40 protein, His tag

**Cat. No. GTX00241-pro**

**Application** Functional Assay

**Species** Human

**Package**

10 µg

## APPLICATION

### Application Note

Ribonuclease P (RNASEP) is a type of ribonuclease which cleaves RNA. RNase P is unique from other RNases in that it is a ribozyme – a ribonucleic acid that acts as a catalyst in the same way that a protein based enzyme would. Its function is to cleave off an extra, or precursor, sequence of RNA on tRNA molecules. Besides, Methyl CpG Binding Protein 2 (MECP2) has been identified as an interactor of RNASEP, thus a binding ELISA assay was conducted to detect the interaction of recombinant human RNASEP and recombinant human MECP2. Briefly, RNASEP were diluted serially in PBS, with 0.01% BSA (pH 7.4). Duplicate samples of 100 µl were then transferred to MECP2-coated microtiter wells and incubated for 2h at 37°C. Wells were washed with PBST and incubated for 1h with anti-RNASEP pAb, then aspirated and washed 3 times. After incubation with HRP labelled secondary antibody, wells were aspirated and washed 3 times. With the addition of substrate solution, wells were incubated 15-25 minutes at 37°C. Finally, add 50 µl stop solution to the wells and read at 450nm immediately. The binding activity of RNASEP and MECP2 was in a dose dependent manner.

**Observed MW** 28 kDa.

## PROPERTIES

**Form** Lyophilized powder

**Buffer** Reconstitute with 20mM Tris and 150mM NaCl to 0.1-1.0mg/ml. Do not vortex. Lyophilized from 20mM Tris, 150mM NaCl, 1mM EDTA, 1mM DTT, 0.01% SKL, 5% Trehalose.

**Preservative** ProClin 300

**Storage** For short-term storage (1-2 weeks), store at 4°C. For long-term storage, store at -20°C or below. After reconstitution, keep as concentrated solution. Avoid freeze-thaw cycles.

**Region/Sequence** N-terminal His-Tag; Cys49~Asn258 (NP\_001273061.1)

**Expression System** E. coli

**Purity** > 90%

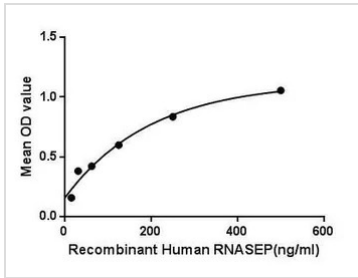
**Endotoxin** < 1 EU/µg

**Conjugation** Unconjugated

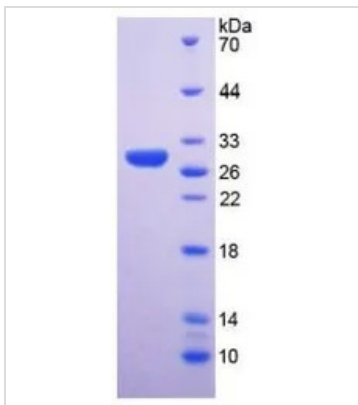
**Note** For laboratory use only. Not for any clinical, therapeutic, or diagnostic use in humans or animals. Not for animal or human consumption.



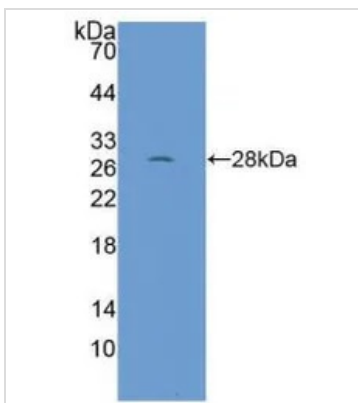
For full product information, images and publications, please visit our [website](#).

**DATA IMAGES**

**GTX00241-pro Functional Assay Image**

Functional ELISA analysis of GTX00241-pro Human RPP40 protein which can bind immobilized MEC2 protein.


**GTX00241-pro Image**

SDS-PAGE analysis of GTX00241-pro Human RPP40 protein.


**GTX00241-pro Image**

WB analysis of GTX00241-pro Human RPP40 protein.



For full product information, images and publications, please visit our [website](https://www.genetex.com).