

Human MX1 protein, His tag

Cat. No. GTX00244-pro

Applications Functional Assay**Species** Human

References (1)

Package

10 µg

Applications

Application Note

Interferon-induced GTP-binding protein Mx1 is a protein that in humans is encoded by the MX1 gene. In mouse, the interferon-inducible Mx protein is responsible for a specific antiviral state against influenza virus infection. The protein encoded by this gene is similar to the mouse protein as determined by its antigenic relatedness, induction conditions, physicochemical properties, and amino acid analysis. This cytoplasmic protein is a member of both the dynamin family and the family of large GTPases. Besides, Tubulin Beta (TUBb) has been identified as an interactor of MX1, thus a binding ELISA assay was conducted to detect the interaction of recombinant human MX1 and recombinant human TUBb. Briefly, MX1 was diluted serially in PBS with 0.01% BSA (pH 7.4). Duplicate samples of 100 µl were then transferred to TUBb-coated microtiter wells and incubated for 2h at 37°C. Wells were washed with PBST and incubated for 1h with anti-MX1 pAb, then aspirated and washed 3 times. After incubation with HRP labelled secondary antibody, wells were aspirated and washed 3 times. With the addition of substrate solution, wells were incubated 15-25 minutes at 37°C. Finally, add 50 µl stop solution to the wells and read at 450nm immediately. The binding activity of MX1 and TUBb was in a dose dependent manner.

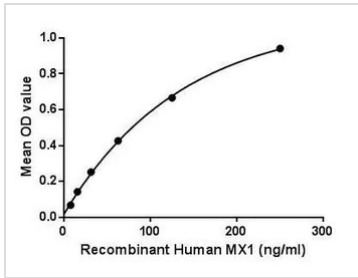
Observed MW (kDa) 34 kDa.

Properties

Form Lyophilized powder**Buffer** Reconstitute with 20mM Tris and 150mM NaCl to 0.1-1.0mg/ml. Do not vortex. Lyophilized from 20mM Tris, 150mM NaCl, 1mM EDTA, 1mM DTT, 0.01% SKL, 5% Trehalose.**Preservative** ProClin 300**Storage** For short-term storage (1-2 weeks), store at 4°C. For long-term storage, store at -20°C or below. After reconstitution, keep as concentrated solution. Avoid freeze-thaw cycles.**Region/Sequence** N-terminal His-Tag; Ser80~Leu342 (NP_001138397.1)**Expression System** E. coli**Purity** > 95%**Endotoxin** < 1 EU/µg**Conjugation** Unconjugated**Note** For laboratory use only. Not for any clinical, therapeutic, or diagnostic use in humans or animals. Not for animal or human consumption.

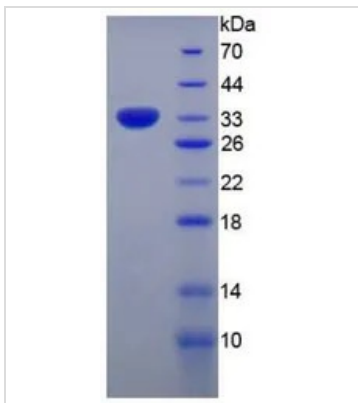
For full product information, images and publications, please visit our [website](#).

DATA IMAGES



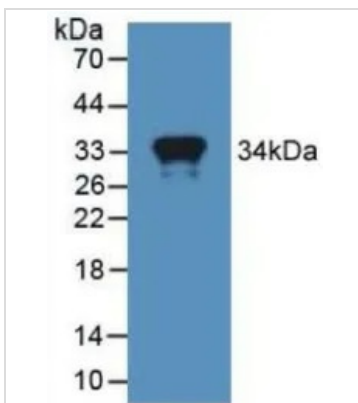
GTX00244-pro Functional Assay Image

Functional ELISA analysis of GTX00244-pro Human MX1 protein which can bind immobilized TUBb protein.



GTX00244-pro Image

SDS-PAGE analysis of GTX00244-pro Human MX1 protein.



GTX00244-pro Image

WB analysis of GTX00244-pro Human MX1 protein.



For full product information, images and publications, please visit our [website](#).