

Human IL29 protein, His tag

Cat. No. GTX00245-pro

Applications Functional Assay**Species** Human**Package**

10 µg

Applications

Application Note

Interleukin-29 (IL-29) is a member of the helical cytokine family and is a type III interferon. It is also known as IFN λ 1 and is highly similar in amino acid sequence to the IL-28, the other type III interferon. IL-29 plays an important role in host defenses against microbes and its gene is highly upregulated in cells infected with viruses. Besides, ATPase, Ca Transporting, Plasma Membrane 2 (ATP2B2) has been identified as an interactor of IL29, thus a binding ELISA assay was conducted to detect the interaction of recombinant human IL29 and recombinant human ATP2B2. Briefly, IL29 were diluted serially in PBS with 0.01% BSA (pH 7.4). Duplicate samples of 100 µl were then transferred to ATP2B2-coated microtiter wells and incubated for 2h at 37 °C. Wells were washed with PBST and incubated for 1h with anti-IL29 pAb, then aspirated and washed 3 times. After incubation with HRP labelled secondary antibody, wells were aspirated and washed 3 times. With the addition of substrate solution, wells were incubated 15-25 minutes at 37°C. Finally, add 50 µl stop solution to the wells and read at 450nm immediately. The binding activity of IL29 and ATP2B2 was in a dose dependent manner.

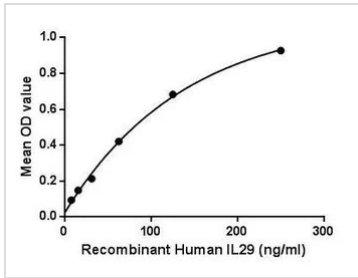
Observed MW (kDa) 27 kDa.

Properties

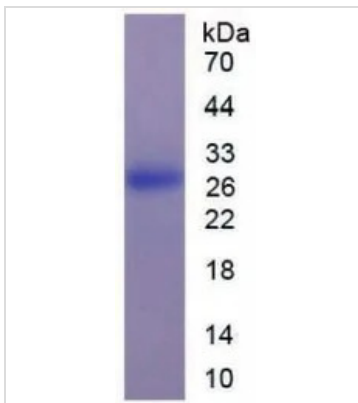
Form Lyophilized powder**Buffer** Reconstitute with 20mM Tris and 150mM NaCl to 0.1-1.0mg/ml. Do not vortex. Lyophilized from 20mM Tris, 150mM NaCl, 1mM EDTA, 1mM DTT, 0.01% SKL, 5% Trehalose.**Preservative** ProClin 300**Storage** For short-term storage (1-2 weeks), store at 4°C. For long-term storage, store at -20°C or below. After reconstitution, keep as concentrated solution. Avoid freeze-thaw cycles.**Region/Sequence** N-terminal His-Tag; Gly20~Thr200 (NP_742152.1)**Expression System** E. coli**Purity** > 90%**Endotoxin** < 1 EU/µg**Conjugation** Unconjugated**Note** For laboratory use only. Not for any clinical, therapeutic, or diagnostic use in humans or animals. Not for animal or human consumption.

For full product information, images and publications, please visit our [website](#).

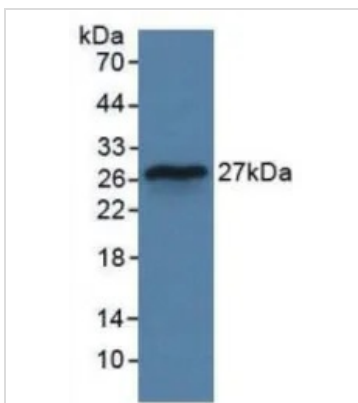
Date 2026 / 01 / 01 Page 1 of 2

DATA IMAGES

GTX00245-pro Functional Assay Image

Functional ELISA analysis of GTX00245-pro Human IL29 protein which can bind immobilized ATP2B2 protein.


GTX00245-pro Image

SDS-PAGE analysis of GTX00245-pro Human IL29 protein.


GTX00245-pro Image

WB analysis of GTX00245-pro Human IL29 protein.



For full product information, images and publications, please visit our [website](https://www.genetex.com).