

## Human Creatine kinase (brain) protein, His tag

Cat. No. GTX00246-pro

**Applications** Functional Assay**Species** Human**Package**

10 µg

## Applications

## Application Note

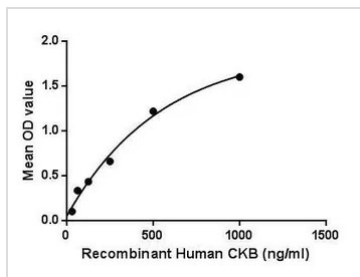
Creatine Kinase, Brain (CKB) also known as CK-BB is a creatine kinase. CKB, consists of a homodimer of two identical brain-type CK-B subunits, is a cytoplasmic enzyme involved in cellular energy homeostasis, with certain fractions of the enzyme being bound to cell membranes, ATPases, and a variety of ATP-requiring enzymes in the cell. Besides, Creatine Kinase, Muscle (CKM) has been identified as an interactor of CKB, thus a binding ELISA assay was conducted to detect the interaction of recombinant human CKB and recombinant human CKM. Briefly, CKB were diluted serially in PBS, with 0.01% BSA (pH 7.4). Duplicate samples of 100 µl were then transferred to CKM-coated microtiter wells and incubated for 2h at 37°C. Wells were washed with PBST and incubated for 1h with anti-CKB pAb, then aspirated and washed 3 times. After incubation with HRP labelled secondary antibody, wells were aspirated and washed 3 times. With the addition of substrate solution, wells were incubated 15-25 minutes at 37°C. Finally, add 50 µl stop solution to the wells and read at 450nm immediately. The binding activity of CKB and CKM was in a dose dependent manner.

**Observed MW (kDa)** 41 kDa.

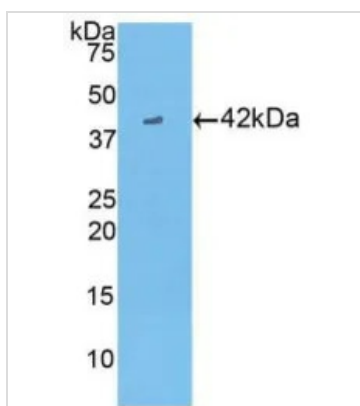
## Properties

**Form** Lyophilized powder**Buffer** Reconstitute with 20mM Tris and 150mM NaCl to 0.1-1.0mg/ml. Do not vortex. Lyophilized from 20mM Tris, 150mM NaCl, 1mM EDTA, 1mM DTT, 0.01% SKL, 5% Trehalose.**Preservative** ProClin 300**Storage** For short-term storage (1-2 weeks), store at 4°C. For long-term storage, store at -20°C or below. After reconstitution, keep as concentrated solution. Avoid freeze-thaw cycles.**Region/Sequence** N-terminal His-Tag; Lys11~Leu367 (NP\_001814.2)**Expression System** E. coli**Purity** > 95%**Endotoxin** < 1 EU/µg**Conjugation** Unconjugated**Note** For laboratory use only. Not for any clinical, therapeutic, or diagnostic use in humans or animals. Not for animal or human consumption.

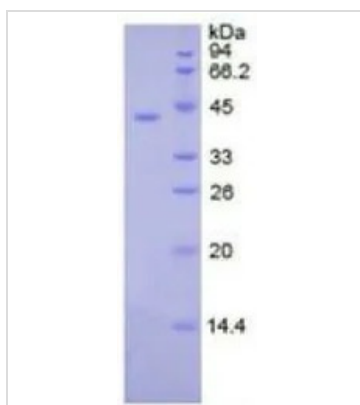
For full product information, images and publications, please visit our [website](#).

**DATA IMAGES**

**GTx00246-pro Functional Assay Image**

Functional ELISA analysis of GTx00246-pro Human Creatine kinase (brain) protein which can bind immobilized FUS protein.


**GTx00246-pro Image**

WB analysis of GTx00246-pro Human Creatine kinase (brain) protein.


**GTx00246-pro Image**

SDS-PAGE analysis of GTx00246-pro Human Creatine kinase (brain) protein.



For full product information, images and publications, please visit our [website](https://www.genetex.com).