

Human Prokineticin 2 protein, His and GST tag (active)

Cat. No. GTX00253-pro**Applications** Functional Assay**Species** Human**Package**

10 µg

Applications

Application Note

Prokineticin 2 (PK2) is a member of prokineticin family. Prokineticin is a secreted protein that potently contracts gastrointestinal smooth muscle. They are thought to be involved in several important physiological processes like neurogenesis, tissue development, angiogenesis, and nociception. Other important physiological roles the Bv8/Prokineticins (PKs) are involved in may include cancer, reproduction, and regulating physiological functions that influence circadian rhythms like hormone secretion, ingestive behaviors, and the sleep/wake cycle. To test the effect of PK2 on cell proliferation, HCT116 colon cancer cells were seeded into triplicate wells of 96-well plates at a density of 5000 cells/well and allowed to attach, replaced with serum-free overnight, then the medium was replaced with 2% serum standard DMEM containing various concentrations of recombinant human PK2. After incubated for 96h, cells were observed by inverted microscope and cell proliferation was measured by Cell Counting Kit-8 (CCK-8). Briefly, 10 µl of CCK-8 solution was added to each well of the plate, then the absorbance at 450nm was measured using a microplate reader after incubating the plate for 1-4 hours at 37°C. Proliferation of HCT116 cells after incubation with PK2 for 96h observed by inverted microscope.

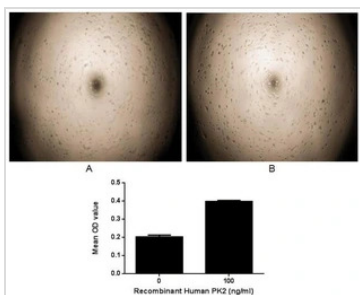
Observed MW (kDa) 39 kDa.

Properties

Form Lyophilized powder**Buffer** Reconstitute with 20mM Tris and 150mM NaCl to 0.1-1.0mg/ml. Do not vortex. Lyophilized from 20mM Tris, 150mM NaCl, 1mM EDTA, 1mM DTT, 0.01% SKL, 5% Trehalose.**Preservative** ProClin 300**Storage** For short-term storage (1-2 weeks), store at 4°C. For long-term storage, store at -20°C or below. After reconstitution, keep as concentrated solution. Avoid freeze-thaw cycles.**Region/Sequence** N-terminal His and GST-Tag; Ile30~Gln128 (NP_001119600.1)**Expression System** E. coli**Purity** > 95%**Endotoxin** < 1 EU/µg**Conjugation** Unconjugated**Note** For laboratory use only. Not for any clinical, therapeutic, or diagnostic use in humans or animals. Not for animal or human consumption.

For full product information, images and publications, please visit our [website](#).

DATA IMAGES

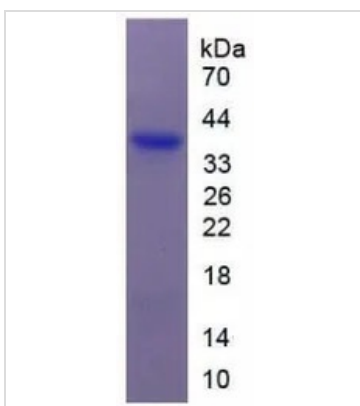


GTX00253-pro Functional Assay Image

Cell proliferation effect of GTX00253-pro Human Prokineticin 2 protein (active). Cell viability was measured by Cell Counting Kit-8 (CCK-8).

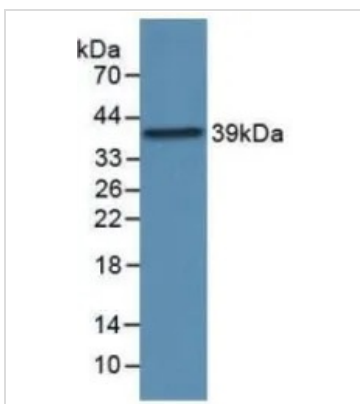
(A) Unstimulated HCT116 cells cultured in DMEM for 96hrs.

(B) HCT116 cells cultured in DMEM, stimulated with 100 ng/ml PK2 for 96hrs.



GTX00253-pro Image

SDS-PAGE analysis of GTX00253-pro Human Prokineticin 2 protein (active).



GTX00253-pro Image

WB analysis of GTX00253-pro Human Prokineticin 2 protein (active).



For full product information, images and publications, please visit our [website](http://www.genetex.com).