

Human FGF23 protein, His tag

Cat. No. GTX00257-pro

Applications Functional Assay**Species** Human**Package**

10 µg

Applications

Application Note

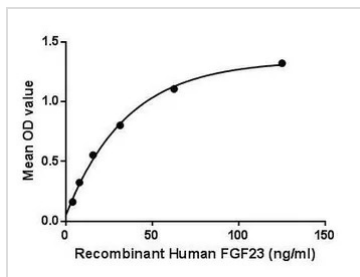
Fibroblast growth factor 23 or FGF23 is a member of the fibroblast growth factor (FGF) family which is responsible for phosphate and vitamin D metabolism. The main function of FGF23 seems to be regulation of phosphate concentration in plasma. FGF23 decreases the reabsorption and increases excretion of phosphate and suppress 1-alpha-hydroxylase, reducing its ability to activate vitamin D and subsequently impairing calcium absorption. Besides, Fibroblast Growth Factor Receptor 2 (FGFR2) has been identified as an interactor of FGF23, thus a binding ELISA assay was conducted to detect the interaction of recombinant human FGF23 and recombinant human FGFR2. Briefly, FGF23 were diluted serially in PBS, with 0.01% BSA (pH 7.4). Duplicate samples of 100 µl were then transferred to FGFR2-coated microtiter wells and incubated for 2h at 37°C. Wells were washed with PBST and incubated for 1h with anti-FGF23 pAb, then aspirated and washed 3 times. After incubation with HRP labelled secondary antibody, wells were aspirated and washed 3 times. With the addition of substrate solution, wells were incubated 15-25 minutes at 37°C. Finally, add 50 µl stop solution to the wells and read at 450nm immediately. The binding activity of FGF23 and FGFR2 was in a dose dependent manner.

Observed MW (kDa) 11 kDa.

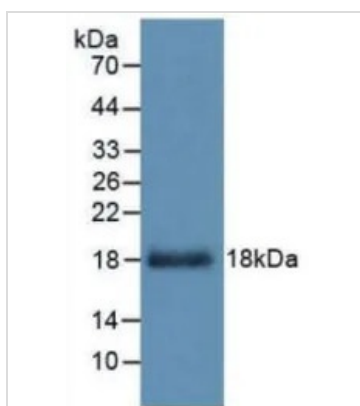
Properties

Form Lyophilized powder**Buffer** Reconstitute with 20mM Tris and 150mM NaCl to 0.1-1.0mg/ml. Do not vortex. Lyophilized from 20mM Tris, 150mM NaCl, 1mM EDTA, 1mM DTT, 0.01% SKL, 5% Trehalose.**Preservative** ProClin 300**Storage** For short-term storage (1-2 weeks), store at 4°C. For long-term storage, store at -20°C or below. After reconstitution, keep as concentrated solution. Avoid freeze-thaw cycles.**Region/Sequence** N-terminal His-Tag; Asp79~Arg160 (NP_065689.1)**Expression System** E. coli**Purity** > 95%**Endotoxin** < 1 EU/µg**Conjugation** Unconjugated**Note** For laboratory use only. Not for any clinical, therapeutic, or diagnostic use in humans or animals. Not for animal or human consumption.

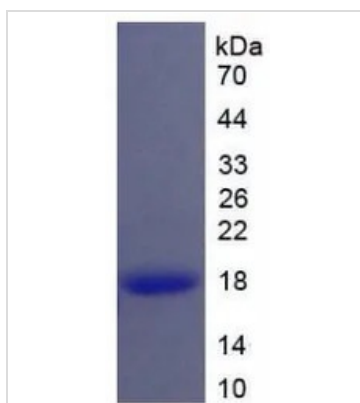
For full product information, images and publications, please visit our [website](#).

DATA IMAGES

GTx00257-pro Functional Assay Image

Functional ELISA analysis of GTx00257-pro Human FGF23 protein which can bind immobilized FGFR2 protein.


GTx00257-pro Image

WB analysis of GTx00257-pro Human FGF23 protein.


GTx00257-pro Image

SDS-PAGE analysis of GTx00257-pro Human FGF23 protein.



For full product information, images and publications, please visit our [website](https://www.genetex.com).