

Human Hepcidin protein, His and Human IgG1 Fc tag

Cat. No. GTX00261-pro

Applications Functional Assay

Species Human

Package

10 µg

Applications

Application Note

Hepcidin (Hepc) is a regulator of iron metabolism. Hepcidin inhibits iron transport by binding to the iron export channel ferroportin which is located on the basolateral surface of gut enterocytes and the plasma membrane of reticuloendothelial cells (macrophages). Hepcidin ultimately breaks down the transporter protein in the lysosome. Inhibiting ferroportin prevents iron from being exported and the iron is sequestered in the cells. Besides, Ferroportin (FPN) has been identified as an interactor of Hepc, thus a binding ELISA assay was conducted to detect the interaction of recombinant human Hepc and recombinant human FPN. Briefly, Hepc were diluted serially in PBS, with 0.01% BSA (pH 7.4). Duplicate samples of 100 µl were then transferred to FPN-coated microtiter wells and incubated for 2h at 37°C. Wells were washed with PBST and incubated for 1h with anti-Hepc pAb, then aspirated and washed 3 times. After incubation with HRP labelled secondary antibody, wells were aspirated and washed 3 times. With the addition of substrate solution, wells were incubated 15-25 minutes at 37°C. Finally, add 50 µl stop solution to the wells and read at 450nm immediately. The binding activity of Hepc and FPN was in a dose dependent manner.

Observed MW (kDa) 34 kDa.

Properties

Form Lyophilized powder

Buffer Reconstitute with 10mM PBS (pH7.4) to 0.1-1.0mg/ml. Do not vortex. Lyophilized from PBS (pH7.4), 0.01% SKL, 1mM DTT, 5% Trehalose.

Preservative ProClin 300

Storage For short-term storage (1-2 weeks), store at 4°C. For long-term storage, store at -20°C or below. After reconstitution, keep as concentrated solution. Avoid freeze-thaw cycles.

Region/Sequence N-terminal His-Tag and C-terminal Human IgG1 Fc-Tag; Ser25~Thr84 (NP_066998.1)

Expression System HEK293 cells

Purity > 95%

Endotoxin < 1 EU/µg

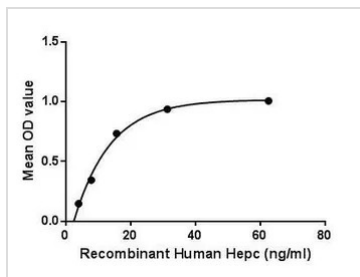
Conjugation Unconjugated

Note For laboratory use only. Not for any clinical, therapeutic, or diagnostic use in humans or animals. Not for animal or human consumption.

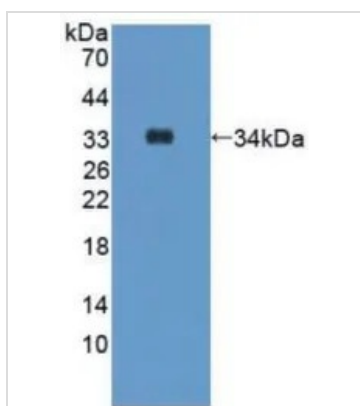


For full product information, images and publications, please visit our [website](#).

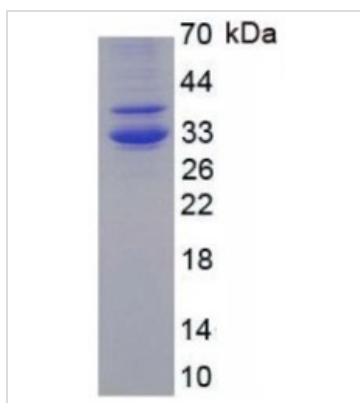
Date 2026 / 01 / 01 Page 1 of 2

DATA IMAGES

GTX00261-pro Functional Assay Image

Functional ELISA analysis of GTX00261-pro Human Hepcidin protein which can bind immobilized FPN protein.


GTX00261-pro Image

WB analysis of GTX00261-pro Human Hepcidin protein.


GTX00261-pro Image

SDS-PAGE analysis of GTX00261-pro Human Hepcidin protein.



For full product information, images and publications, please visit our [website](https://www.genetex.com).