

Human IL2 protein, His tag (active)

Cat. No. GTX00265-pro

Applications Functional Assay**Species** Human**Package**

10 µg

Applications

Application Note

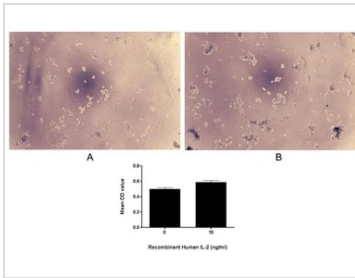
Interleukin-2 (IL-2) is an interleukin, a type of cytokine signaling molecule in the immune system. IL-2 has essential roles in key functions of the immune system, tolerance and immunity, primarily via its direct effects on T cells. In the thymus, where T cells mature, it prevents autoimmune diseases by promoting the differentiation of certain immature T cells into regulatory T cells, which suppress other T cells that are otherwise primed to attack normal healthy cells in the body. IL-2 also promotes the differentiation of T cells into effector T cells and into memory T cells when the initial T cell is also stimulated by an antigen, thus helping the body fight off infections. To measure the effect of IL-2 on cell proliferation, CTLL-2 cells were seeded into triplicate wells of 96-well plates at a density of 2000 cells/well with 2% serum standard RPMI-1640 contain various concentrations of recombinant human IL-2. After incubated for 96h, cells were observed by inverted microscope and cell proliferation was measured by Cell Counting Kit-8 (CCK-8). Briefly, 10 µl of CCK-8 solution was added to each well of the plate, then the absorbance at 450nm was measured using a microplate reader after incubating the plate for 1-4 hours at 37°C. Proliferation of CTLL-2 cells after incubation with IL-2 for 96h observed by inverted microscope.

Observed MW (kDa) 17 kDa.

Properties

Form Lyophilized powder**Buffer** Reconstitute with 20mM Tris and 150mM NaCl to 0.1-1.0mg/ml. Do not vortex. Lyophilized from 20mM Tris, 150mM NaCl, 1mM EDTA, 1mM DTT, 0.01% SKL, 5% Trehalose.**Preservative** ProClin 300**Storage** For short-term storage (1-2 weeks), store at 4°C. For long-term storage, store at -20°C or below. After reconstitution, keep as concentrated solution. Avoid freeze-thaw cycles.**Region/Sequence** N-terminal His-Tag; Ala21~Thr153 (NP_000577.2)**Expression System** E. coli**Purity** > 95%**Endotoxin** < 1 EU/µg**Conjugation** Unconjugated**Note** For laboratory use only. Not for any clinical, therapeutic, or diagnostic use in humans or animals. Not for animal or human consumption.

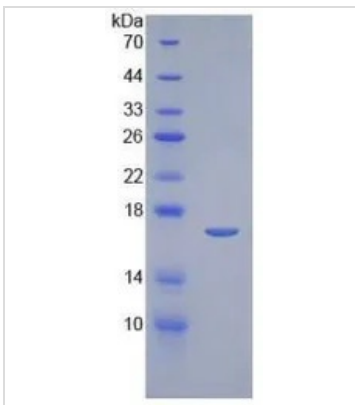
For full product information, images and publications, please visit our [website](#).

DATA IMAGES

GTx00265-pro Functional Assay Image

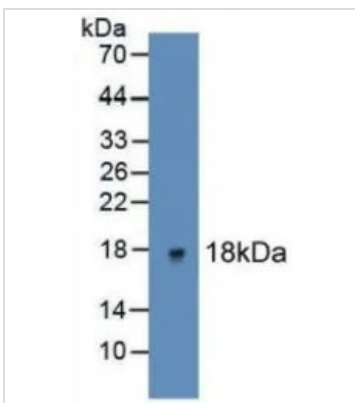
Cell proliferation effect of GTx00265-pro Human IL2 protein (active). Cell viability was measured by Cell Counting Kit-8 (CCK-8).

(A) Unstimulated CTLL-2 cells cultured in RPMI-1640 for 96hrs.

(B) CTLL-2 cells cultured in RPMI-1640, stimulated with 10 ng/ml IL-2 for 96hrs.


GTx00265-pro Image

SDS-PAGE analysis of GTx00265-pro Human IL2 protein (active).


GTx00265-pro Image

WB analysis of GTx00265-pro Human IL2 protein (active).



For full product information, images and publications, please visit our [website](http://www.genetex.com).