

Human Factor B (Ba fragment) protein, His and GST tag (active)

Cat. No. GTX00269-pro

Application Functional Assay**Species** Human**Package**

10 µg

APPLICATION

Application Note

Complement Factor B (CFB) a component of the alternative pathway of complement activation. Upon activation of the alternative pathway, it is cleaved by complement factor D yielding the noncatalytic chain Ba and the catalytic subunit Bb. The active subunit Bb is a serine protease that associates with C3b to form the alternative pathway C3 convertase. The method of functional assay of CFB was tested in hemolysis assays. Two-fold dilute the recombinant human CFB with 0.9% NaCl, 2 mmol/L MgCl₂, and then add same volume of 1% rabbit erythrocyte (RaE) in 8 mmol/L EDTA, the negative control only without MgCl₂. All the samples incubated at 37°C. After 3 hours later, take 10 µl supernatant and 90µl TMB incubated at 37°C for 5-10 minutes. Finally, add 50 µl stop solution to the wells and read at 450nm immediately. The minimal effective concentration of CFB is 0.3125µg/ml.

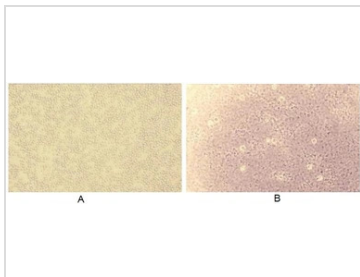
Observed MW 44 kDa.

PROPERTIES

Form Lyophilized powder**Buffer** Reconstitute with 20mM Tris and 150mM NaCl to 0.1-1.0mg/ml. Do not vortex. Lyophilized from 20mM Tris, 150mM NaCl, 1mM EDTA, 1mM DTT, 0.01% SKL, 5% Trehalose.**Preservative** ProClin 300**Storage** For short-term storage (1-2 weeks), store at 4°C. For long-term storage, store at -20°C or below. After reconstitution, keep as concentrated solution. Avoid freeze-thaw cycles.**Region/Sequence** N-terminal His and GST-Tag; Gly35~Asn160 (NP_001701.2)**Expression System** E. coli**Purity** > 90%**Endotoxin** < 1 EU/µg**Conjugation** Unconjugated**Note** For laboratory use only. Not for any clinical, therapeutic, or diagnostic use in humans or animals. Not for animal or human consumption.

For full product information, images and publications, please visit our [website](#).

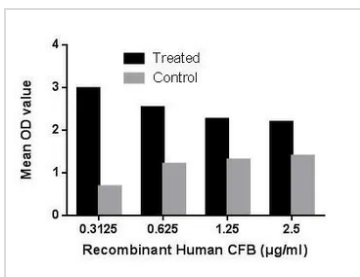
Date 2024 / 05 / 12 Page 1 of 2

DATA IMAGES

GTX00269-pro Functional Assay Image

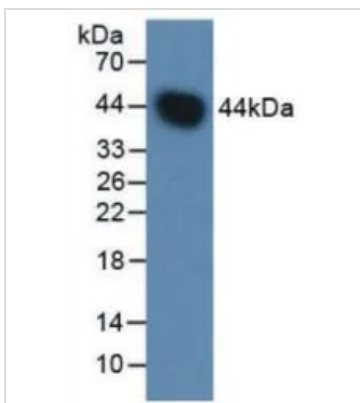
The hemagglutination effect of GTX00269-pro Human Factor B protein (active).

(A) 1% rabbit erythrocyte treated with 0.3125 $\mu\text{g/ml}$ CFB, 8 mmol/l EDTA without MgCl_2 .

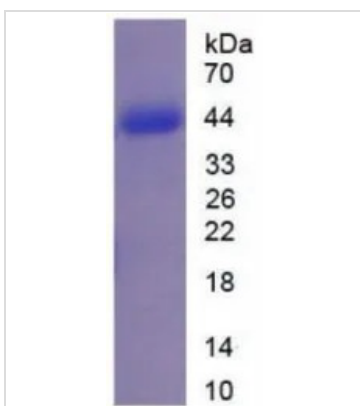
(B) 1% rabbit erythrocyte treated with 0.3125 $\mu\text{g/ml}$ CFB, 8 mmol/l EDTA with 0.5 mmol/l MgCl_2 for 1hr.


GTX00269-pro Functional Assay Image

Hemolysis activity by various concentrations of GTX00269-pro Human Factor B protein (active).


GTX00269-pro Image

WB analysis of GTX00269-pro Human Factor B protein (active).


GTX00269-pro Image

SDS-PAGE analysis of GTX00269-pro Human Factor B protein (active).



For full product information, images and publications, please visit our [website](https://www.genetex.com).