

Human LPA protein, His tag

Cat. No. GTX00272-pro

Applications Functional Assay**Species** Human**Package**

10 µg

Applications

Application Note

Lipoprotein, a (Lpa) is a lipoprotein subclass. Lpa is assembled at the hepatocyte cell membrane surface, while other scenarios exist with regard to the location of assembly. It mainly exists in plasma. Lpa contributes to the process of atherogenesis. It also may enhance coagulation by inhibiting the function of tissue factor pathway inhibitor. Lpa carries cholesterol and binds atherogenic proinflammatory oxidized phospholipids as a preferential carrier of oxidized phospholipids in human plasma, which attract inflammatory cells to vessel walls and leads to smooth muscle cell proliferation. Moreover, Lpa also is hypothesized to be involved in wound healing and tissue repair, interacting with components of the vascular wall and extra cellular matrix. Besides, Fibronectin (FN) has been identified as an interactor of Lpa, thus a binding ELISA assay was conducted to detect the interaction of recombinant human Lpa and recombinant human FN. Briefly, Lpa were diluted serially in PBS, with 0.01% BSA (pH 7.4). Duplicate samples of 100 µl were then transferred to FN-coated microtiter wells and incubated for 2h at 37°C. Wells were washed with PBST and incubated for 1h with anti-Lpa pAb, then aspirated and washed 3 times. After incubation with HRP labelled secondary antibody, wells were aspirated and washed 3 times. With the addition of substrate solution, wells were incubated 15-25 minutes at 37°C. Finally, add 50 µl stop solution to the wells and read at 450nm immediately. The binding activity of Lpa and FN was in a dose dependent manner.

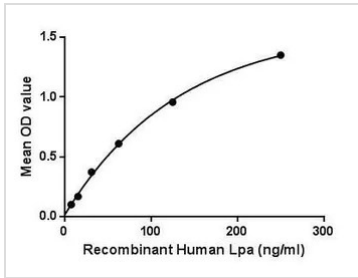
Observed MW (kDa) 39 kDa.

Properties

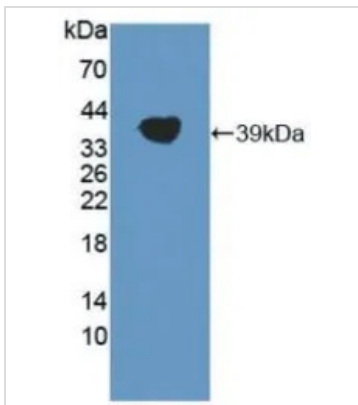
Form Lyophilized powder**Buffer** Reconstitute with 20mM Tris and 150mM NaCl to 0.1-1.0mg/ml. Do not vortex. Lyophilized from 20mM Tris, 150mM NaCl, 1mM EDTA, 1mM DTT, 0.01% SKL, 5% Trehalose.**Preservative** ProClin 300**Storage** For short-term storage (1-2 weeks), store at 4°C. For long-term storage, store at -20°C or below. After reconstitution, keep as concentrated solution. Avoid freeze-thaw cycles.**Region/Sequence** N-terminal His-Tag; Asp1719~Arg2038**Expression System** E. coli**Purity** > 95%**Endotoxin** < 1 EU/µg**Conjugation** Unconjugated**Note** For laboratory use only. Not for any clinical, therapeutic, or diagnostic use in humans or animals. Not for animal or human consumption.

For full product information, images and publications, please visit our [website](#).

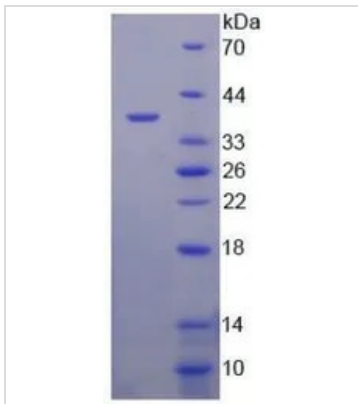
Date 2026 / 01 / 01 Page 1 of 2

DATA IMAGES

GTx00272-pro Functional Assay Image

Functional ELISA analysis of GTx00272-pro Human LPA protein which can bind immobilized FN protein.


GTx00272-pro Image

WB analysis of GTx00272-pro Human LPA protein.


GTx00272-pro Image

SDS-PAGE analysis of GTx00272-pro Human LPA protein.



For full product information, images and publications, please visit our [website](https://www.genetex.com).