

Human Annexin II protein, His tag (active)

Cat. No. GTX00273-pro

Applications Functional Assay**Species** Human**Package**

10 µg

Applications

Application Note

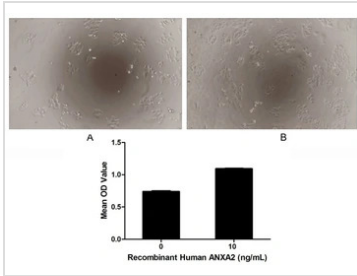
Annexin A2 (ANXA2) also known as annexin II is a member of the annexin family. Members of this calcium-dependent phospholipid-binding protein family play a role in the regulation of cellular growth and in signal transduction pathways. This protein functions as an autocrine factor which heightens osteoclast formation and bone resorption. ANXA2 is up-regulated in various tumor types and plays multiple roles in regulating cellular functions, including angiogenesis, proliferation, apoptosis, cell migration, invasion and adhesion. To test the effect of ANXA2 on cell proliferation, Hela cells were seeded into triplicate wells of 96-well plates at a density of 2000 cells/well and allowed to attach, replaced with serum-free overnight, then the medium was replaced with 1% serum standard DMEM prior to the addition of various concentrations of recombinant human ANXA2. After incubated for 96h, cells were observed by inverted microscope and cell proliferation was measured by Cell Counting Kit-8 (CCK-8). Briefly, 10 µl of CCK-8 solution was added to each well of the plate, then the absorbance at 450nm was measured using a microplate reader after incubating the plate for 1-4 hours at 37°C. Proliferation of Hela cells after incubation with ANXA2 for 96h observed by inverted microscope. Cell viability was assessed by CCK-8 assay after incubation with recombinant ANXA2 for 96h. And ANXA2 significantly increased cell viability of Hela cells.

Observed MW (kDa) 42 kDa.

Properties

Form Lyophilized powder**Buffer** Reconstitute with 20mM Tris and 150mM NaCl to 0.1-1.0mg/ml. Do not vortex. Lyophilized from 20mM Tris, 150mM NaCl, 1mM EDTA, 1mM DTT, 0.01% SKL, 5% Trehalose.**Preservative** ProClin 300**Storage** For short-term storage (1-2 weeks), store at 4°C. For long-term storage, store at -20°C or below. After reconstitution, keep as concentrated solution. Avoid freeze-thaw cycles.**Region/Sequence** Full length protein, N-terminal His-Tag; Met1~Asp339 (NP_001002857.1)**Expression System** E. coli**Purity** > 95%**Endotoxin** < 1 EU/µg**Conjugation** Unconjugated**Note** For laboratory use only. Not for any clinical, therapeutic, or diagnostic use in humans or animals. Not for animal or human consumption.

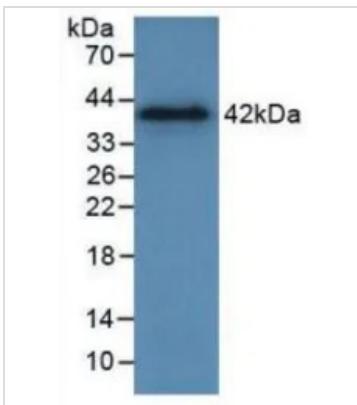
For full product information, images and publications, please visit our [website](#).

DATA IMAGES

GTX00273-pro Functional Assay Image

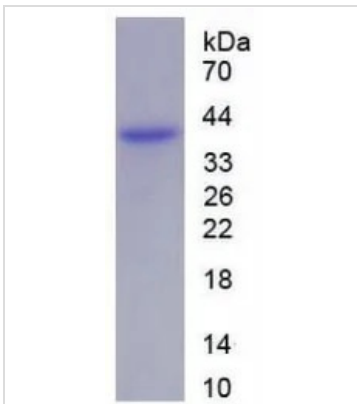
Cell proliferation effect of GTX00273-pro Human Annexin II protein (active). Cell viability was measured by Cell Counting Kit-8 (CCK-8).

(A) Unstimulated HeLa cells cultured in DMEM for 96hrs.

(B) HeLa cells cultured in DMEM, stimulated with 10 ng/ml ANXA2 for 96hrs.


GTX00273-pro Image

WB analysis of GTX00273-pro Human Annexin II protein (active).


GTX00273-pro Image

SDS-PAGE analysis of GTX00273-pro Human Annexin II protein (active).



For full product information, images and publications, please visit our [website](https://www.genetex.com).