

Human FABP3 protein, His tag

Cat. No. GTX00275-pro

Applications Functional Assay**Species** Human**Package**

10 µg

Applications

Application Note

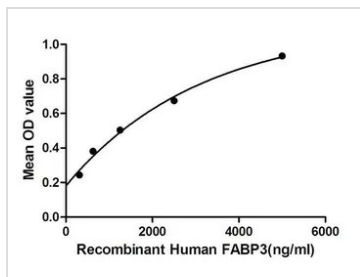
Fatty Acid Binding Protein 3, Muscle And Heart (FABP3) also known as mammary-derived growth inhibitor is a protein that in humans is encoded by the FABP3 gene. FABP3 is a small cytoplasmic protein (15kDa) released from cardiac myocytes following an ischemic episode. It is involved in active fatty acid metabolism where it transports fatty acids from the cell membrane to mitochondria for oxidation. Besides, Fatty Acid Binding Protein 3, Muscle And Heart (FABP3) has been identified as an interactor of SOD1, thus a binding ELISA assay was conducted to detect the interaction of recombinant human FABP3 and recombinant human SOD1. Briefly, FABP3 were diluted serially in PBS, with 0.01% BSA (pH 7.4). Duplicate samples of 100 µl were then transferred to SOD1-coated microtiter wells and incubated for 2h at 37°C. Wells were washed with PBST and incubated for 1h with anti-FABP3 pAb, then aspirated and washed 3 times. After incubation with HRP labelled secondary antibody, wells were aspirated and washed 3 times. With the addition of substrate solution, wells were incubated 15-25 minutes at 37°C. Finally, add 50 µl stop solution to the wells and read at 450nm immediately. The binding activity of FABP3 and SOD1 was in a dose dependent manner.

Observed MW (kDa) 16 kDa.

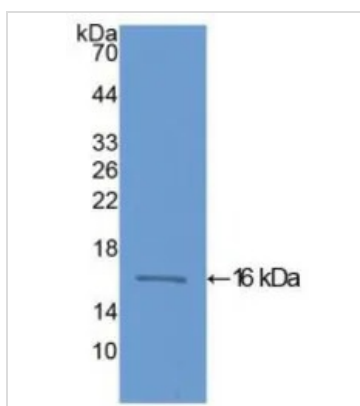
Properties

Form Lyophilized powder**Buffer** Reconstitute with 20mM Tris and 150mM NaCl to 0.1-1.0mg/ml. Do not vortex. Lyophilized from 20mM Tris, 150mM NaCl, 1mM EDTA, 1mM DTT, 0.01% SKL, 5% Trehalose.**Preservative** ProClin 300**Storage** For short-term storage (1-2 weeks), store at 4°C. For long-term storage, store at -20°C or below. After reconstitution, keep as concentrated solution. Avoid freeze-thaw cycles.**Region/Sequence** Full length protein, N-terminal His-Tag; Met1~Ala133 (NP_004093.1)**Expression System** E. coli**Purity** > 95%**Endotoxin** < 1 EU/µg**Conjugation** Unconjugated**Note** For laboratory use only. Not for any clinical, therapeutic, or diagnostic use in humans or animals. Not for animal or human consumption.

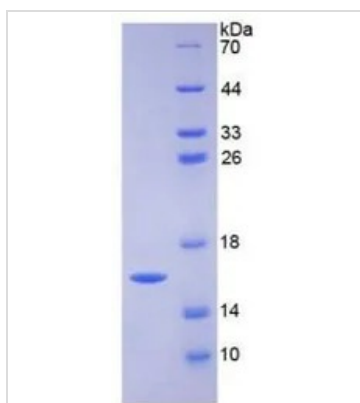
For full product information, images and publications, please visit our [website](#).

DATA IMAGES

GTX00275-pro Functional Assay Image

Functional ELISA analysis of GTX00275-pro Human FABP3 protein which can bind immobilized SOD1 protein.


GTX00275-pro Image

WB analysis of GTX00275-pro Human FABP3 protein.


GTX00275-pro Image

SDS-PAGE analysis of GTX00275-pro Human FABP3 protein.



For full product information, images and publications, please visit our [website](https://www.genetex.com).