

Human SOD3 protein, His tag

Cat. No. GTX00276-pro

Applications Functional Assay**Species** Human**Package**

10 µg

Applications

Application Note

Extracellular superoxide dismutase [Cu-Zn] is an enzyme that in humans is encoded by the SOD3 gene. This gene encodes a member of the superoxide dismutase (SOD) protein family. SODs are antioxidant enzymes that catalyze the dismutation of two superoxide radicals into hydrogen peroxide and oxygen. According to the report, in a weakly alkaline buffer solution (pH 8.2) with N-tris (hydroxymethyl) amino methane-HCl, pyrogallol can occur autooxidation in the air, then SOD can inhibit this reaction. Thus, we use this way to measure the activity of recombinant human SOD3. The reaction was performed in adding 30µl pyrogallol (50mmol/L) to 900µl Tris-HCl (50mmol/L) in 1.5 ml cuvette (1.0 cm light path), rapidly mixing at 25°C, then read at 325nm (zero the spectrophotometer using 50 mmol/L Tris-HCl), record the OD value every 30 second for 6 times. Control the pyrogallol autooxidation rate at 0.70 OD/min. After, adding various concentrations of recombinant of SOD3 to 900µl Tris-HCl (50 mmol/L), incubated for 20min at 25°C, then adding 30µl pyrogallol (50 mmol/L) to each tube, rapidly mixing and read at 325nm, record the OD value every 30 second for 6 times. Under these conditions, the enzyme amount of 50% per minute inhibition of pyrogallol autooxidation is defined as a unit.

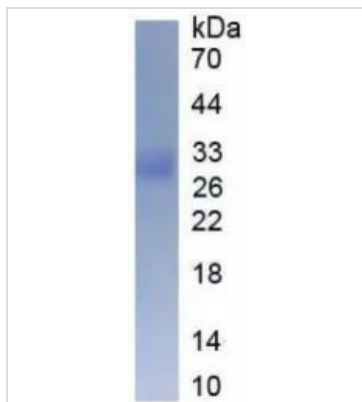
Observed MW (kDa) 28 kDa.

Properties

Form Lyophilized powder**Buffer** Reconstitute with 20mM Tris and 150mM NaCl to 0.1-1.0mg/ml. Do not vortex. Lyophilized from 20mM Tris, 150mM NaCl, 1mM EDTA, 1mM DTT, 0.01% SKL, 5% Trehalose.**Preservative** ProClin 300**Storage** For short-term storage (1-2 weeks), store at 4°C. For long-term storage, store at -20°C or below. After reconstitution, keep as concentrated solution. Avoid freeze-thaw cycles.**Region/Sequence** N-terminal His-Tag; Trp19~Ala240 (NP_003093.2)**Expression System** HEK293 cells**Purity** > 95%**Endotoxin** < 1 EU/µg**Conjugation** Unconjugated**Note** For laboratory use only. Not for any clinical, therapeutic, or diagnostic use in humans or animals. Not for animal or human consumption.

For full product information, images and publications, please visit our [website](#).

DATA IMAGES



GTX00276-pro Image

SDS-PAGE analysis of GTX00276-pro Human SOD3 protein.



For full product information, images and publications, please visit our [website](#).