

Human IL1 Receptor antagonist protein, His tag

Cat. No. GTX00277-pro

Applications Functional Assay**Species** Human**Package**

10 µg

Applications

Application Note

IL-1RA is an agent that binds non-productively to the cell surface interleukin-1 receptor (IL-1R), the same receptor that binds interleukin 1 (IL-1), preventing IL-1 from sending a signal to that cell. Besides, Interleukin 1 Alpha (IL-1a) has been identified as an interactor of IL-1RA, thus a binding ELISA assay was conducted to detect the interaction of recombinant human IL-1RA and recombinant human IL-1a. Briefly, IL1RA were diluted serially in PBS, with 0.01% BSA (pH 7.4). Duplicate samples of 100 µl were then transferred to IL-1a-coated microtiter wells and incubated for 2 h at 37°C. Wells were washed with PBST and incubated for 1 h with anti-IL-1RA pAb, then aspirated and washed 3 times. After incubation with HRP labelled secondary antibody, wells were aspirated and washed 3 times. With the addition of substrate solution, wells were incubated 15-25 minutes at 37°C. Finally, add 50 µl stop solution to the wells and read at 450nm immediately. The binding activity of IL-1RA and IL-1a was in a dose dependent manner.

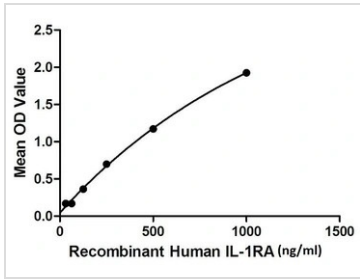
Observed MW (kDa) 22/25/27 kDa.

Properties

Form Lyophilized powder**Buffer** Reconstitute with 20mM Tris and 150mM NaCl to 0.1-1.0mg/ml. Do not vortex. Lyophilized from 20mM Tris, 150mM NaCl, 1mM EDTA, 1mM DTT, 0.01% SKL, 5% Trehalose.**Preservative** ProClin 300**Storage** For short-term storage (1-2 weeks), store at 4°C. For long-term storage, store at -20°C or below. After reconstitution, keep as concentrated solution. Avoid freeze-thaw cycles.**Region/Sequence** N-terminal His-Tag; Arg26~Glu177 (NP_000568.1)**Expression System** HEK293 cells**Purity** > 95%**Endotoxin** < 1 EU/µg**Conjugation** Unconjugated**Note** For laboratory use only. Not for any clinical, therapeutic, or diagnostic use in humans or animals. Not for animal or human consumption.

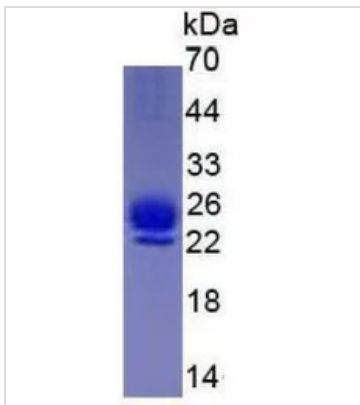
For full product information, images and publications, please visit our [website](#).

DATA IMAGES



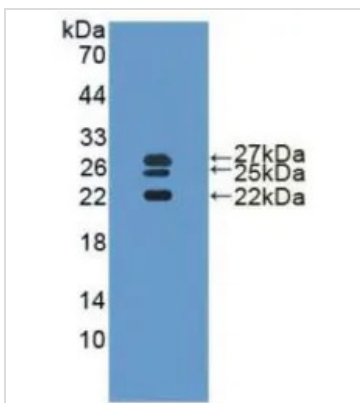
GTX00277-pro Functional Assay Image

Functional ELISA analysis of GTX00277-pro Human IL1 Receptor antagonist protein which can bind immobilized IL-1 alpha protein.



GTX00277-pro Image

SDS-PAGE analysis of GTX00277-pro Human IL1 Receptor antagonist protein.



GTX00277-pro Image

WB analysis of GTX00277-pro Human IL1 Receptor antagonist protein.



For full product information, images and publications, please visit our [website](#).