

Human MIP1 beta protein, His tag (active)

Cat. No. GTX00279-pro**Applications** Functional Assay**Species** Human**Package**

10 µg

Applications

Application Note

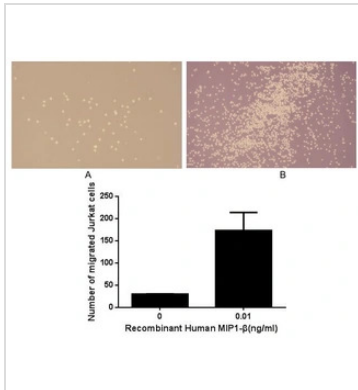
Macrophage inflammatory protein-1 β (MIP-1 β), also known as CCL4 is a CC chemokine with specificity for CCR5 receptors. It is a chemoattractant for natural killer cells, monocytes and a variety of other immune cells. MIP-1 β is a kind of chemotactic cytokine. Thus, chemotaxis assay used 24-well microchemotaxis system was undertaken to detect the chemotactic effect of MIP-1 β on the human T-lymphocyte leukemia cell line Jurkat. Briefly, Jurkat cells were seeded into the upper chambers (100 µl cell suspension, 5x10⁵ cell/ml in RPMI-1640 with FBS free) and recombinant human MIP-1 β (0.0001 ng/ml, 0.001 ng/ml, 0.1 ng/ml, 1 ng/ml, 10 ng/ml, 100 ng/ml diluted separately in serum free RPMI-1640) was added in lower chamber with a polycarbonate filter (8µm pore size) used to separate the two compartments. After incubation at 37°C with 5% CO₂ for 2h, the filter was removed, then cells in low chamber were observed by inverted microscope at low magnification (×100) and the number of migrated cells were counted at high magnification (×200) randomly. The recombinant human MIP-1 β is able to induce migration of Jurkat cells.

Observed MW (kDa) 14 kDa.

Properties

Form Lyophilized powder**Buffer** Reconstitute with 20mM Tris and 150mM NaCl to 0.1-1.0mg/ml. Do not vortex. Lyophilized from 20mM Tris, 150mM NaCl, 1mM EDTA, 1mM DTT, 0.01% SKL, 5% Trehalose.**Preservative** ProClin 300**Storage** For short-term storage (1-2 weeks), store at 4°C. For long-term storage, store at -20°C or below. After reconstitution, keep as concentrated solution. Avoid freeze-thaw cycles.**Region/Sequence** N-terminal His-Tag; Ala24~Asn92 (NP_002975.1)**Expression System** E. coli**Purity** > 97%**Endotoxin** < 1 EU/µg**Conjugation** Unconjugated**Note** For laboratory use only. Not for any clinical, therapeutic, or diagnostic use in humans or animals. Not for animal or human consumption.

For full product information, images and publications, please visit our [website](#).

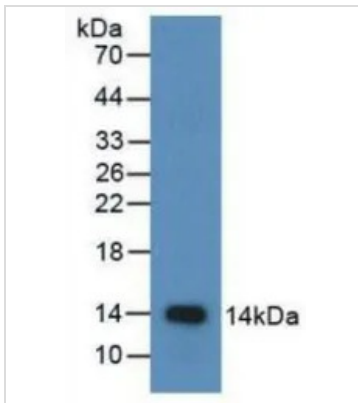
DATA IMAGES

GTx00279-pro Functional Assay Image

The chemotactic effect of GTX00279-pro Human MIP1 beta protein (active).

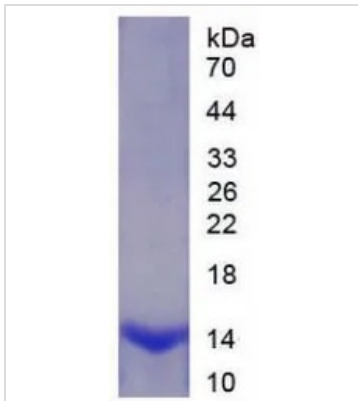
Upper: (A) Jurkat cells were seeded into the upper chambers and serum free RPMI-1640 without MIP-1 beta was added in lower chamber, then cells in lower chamber were observed at low magnification ($\times 100$) after incubation for 2hrs.

(B) Jurkat cells were seeded into the upper chambers and serum free RPMI-1640 with 0.01 ng/ml MIP-1 beta was added in lower chamber, then cells in lower chamber were observed at low magnification ($\times 100$) after incubation for 2hrs.

Lower: The number of migrated cells were counted at high magnification ($\times 200$) randomly (five fields for each filter).


GTx00279-pro Image

WB analysis of GTX00279-pro Human MIP1 beta protein (active).


GTx00279-pro Image

SDS-PAGE analysis of GTX00279-pro Human MIP1 beta protein (active).



For full product information, images and publications, please visit our [website](http://www.genetex.com).