

Mouse GM-CSF protein, His and GST tag (active)

Cat. No. GTX00282-pro

Applications Functional Assay**Species** Mouse**Package**

10 µg

Applications

Application Note

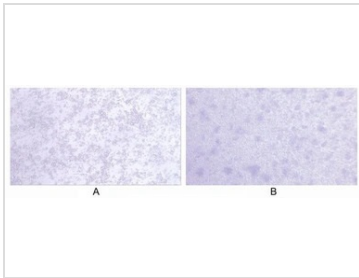
Measured in a cell proliferation assay using mouse BMDC (bone marrow derived dendritic cells). The ED₅₀ (median effective dose) for this effect is less than 0.25 ng/ml. This protein used in cellular experiment in Six-eight weeks old Balb/c mice. At first, mouse femur and tibia were taken out, and then bone marrow was washed out with serum-free RPMI-1640 medium, followed by centrifugation at 1200RPM for 5min (4°C). ACK buffer was added to get rid of red blood cells, and then, centrifuged at 1200RPM for 5min (4°C). Cell pellets were collected and re-suspended, the cells were cultured in DMEM medium supplemented with 10% FBS, or DMEM medium supplemented with 10% FBS and GMCSF at 37°C with 5% CO₂ in thermostatic incubator. Three days later, cells were observed by microscope.

Observed MW (kDa) 44 kDa.

Properties

Form Lyophilized powder**Buffer** Reconstitute with 20mM Tris and 150mM NaCl to 0.1-1.0mg/ml. Do not vortex. Lyophilized from 20mM Tris, 150mM NaCl, 1mM EDTA, 1mM DTT, 0.01% SKL, 5% Trehalose.**Preservative** ProClin 300**Storage** For short-term storage (1-2 weeks), store at 4°C. For long-term storage, store at -20°C or below. After reconstitution, keep as concentrated solution. Avoid freeze-thaw cycles.**Region/Sequence** N-terminal His and GST-Tag; Pro19~Lys141 (NP_034099.2)**Expression System** E. coli**Purity** > 90%**Endotoxin** < 1 EU/µg**Conjugation** Unconjugated**Note** For laboratory use only. Not for any clinical, therapeutic, or diagnostic use in humans or animals. Not for animal or human consumption.

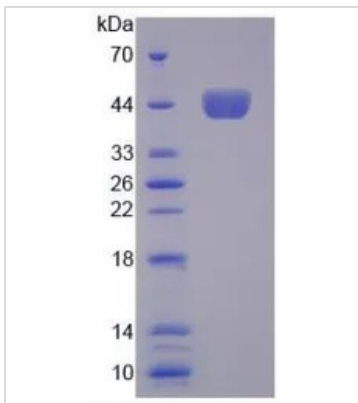
For full product information, images and publications, please visit our [website](#).

DATA IMAGES

GTX00282-pro Functional Assay Image

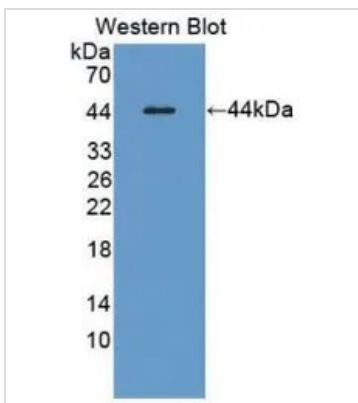
Cell proliferation effect of GTX00282-pro Mouse GM-CSF protein (active).

(A) BMDC cultured in DMEM supplemented with 10% FBS.

(B) BMDC cultured in DMEM supplemented with 10% FBS and GM-CSF.


GTX00282-pro Image

SDS-PAGE analysis of GTX00282-pro Mouse GM-CSF protein (active).


GTX00282-pro Image

WB analysis of GTX00282-pro Mouse GM-CSF protein (active).



For full product information, images and publications, please visit our [website](https://www.genetex.com).