

Mouse IL2 protein, His tag (active)

Cat. No. GTX00285-pro

Application Functional Assay

Species Mouse

Package

10 µg

APPLICATION

Application Note

Interleukin-2 (IL-2), the main lymphokine produced by activated CD4 T-helper lymphocytes, is a potent T-cell growth regulator. In addition to this activity, IL-2 was found to decrease the proliferation of 3T3 fibroblasts in time- and dose-dependent manner. Thus 3T3 cells were seeded overnight at a density of 5000 cells/well, and treated with or without various concentrations of IL2 for 48h, then 3T3 cells were observed by inverted microscope. The inhibitory effect of IL-2 on cell proliferation of 3T3 cells observed by inverted microscope. IL2 significantly decreased cell growth of 3T3 cells, and the ED₅₀ for this effect is typically 9. 876-13. 35 ng/ml.

Observed MW 25 kDa.

PROPERTIES

Form Lyophilized powder

Buffer Reconstitute with 20mM Tris and 150mM NaCl to 0.1-1.0mg/ml. Do not vortex. Lyophilized from 20mM Tris, 150mM NaCl, 1mM EDTA, 1mM DTT, 0.01% SKL, 5% Trehalose.

Preservative ProClin 300

Storage For short-term storage (1-2 weeks), store at 4°C. For long-term storage, store at -20°C or below. After reconstitution, keep as concentrated solution. Avoid freeze-thaw cycles.

Region/Sequence N-terminal His-Tag; Ala21~Gln169 (NP_032392.1)

Expression System HEK293 cells

Purity > 97%

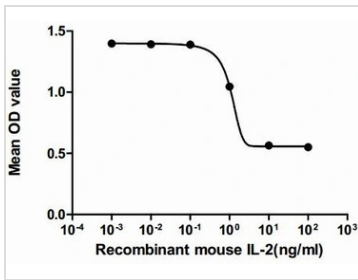
Endotoxin < 1 EU/µg

Conjugation Unconjugated

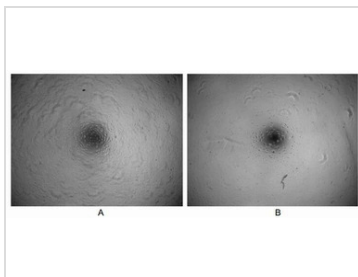
Note For laboratory use only. Not for any clinical, therapeutic, or diagnostic use in humans or animals. Not for animal or human consumption.



For full product information, images and publications, please visit our [website](https://www.genetex.com).

DATA IMAGES

GTX00285-pro Functional Assay Image

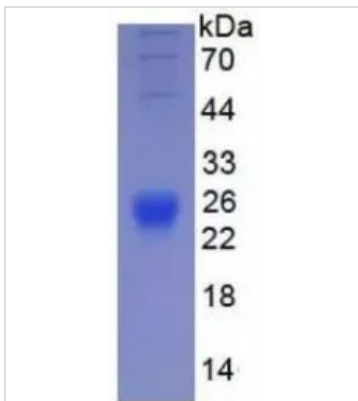
The dose effect curve of GTX00285-pro Mouse IL2 protein (active) on 3T3 cells. After incubation of Mouse IL2 protein (active) for 48 hrs, cell proliferation was measured by Cell Counting Kit-8 (CCK-8).


GTX00285-pro Functional Assay Image

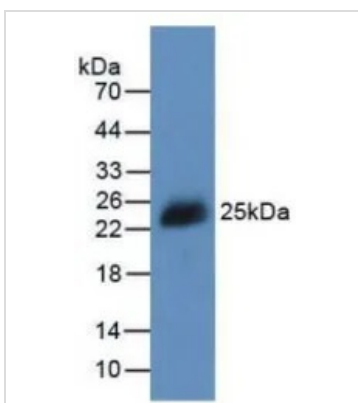
The inhibition effect of GTX00285-pro Mouse IL2 protein (active) on cell proliferation.

(A) Unstimulated 3T3 cells cultured in DMEM for 72hrs.

(B) 3T3 cells cultured in DMEM, stimulated with IL2 (10 ng/ml) for 72hrs.


GTX00285-pro Image

SDS-PAGE analysis of GTX00285-pro Mouse IL2 protein (active).


GTX00285-pro Image

WB analysis of GTX00285-pro Mouse IL2 protein (active).



For full product information, images and publications, please visit our [website](https://www.genetex.com).