

# Mouse IL1 Receptor antagonist protein, His tag

**Cat. No. GTX00289-pro**

**Applications** Functional Assay

**Species** Mouse

**Package**

10 µg

## Applications

### Application Note

IL1RA (interleukin-1 receptor antagonist) is an agent that binds to the cell surface interleukin-1 receptor (IL-1R), which would prevent IL-1 from intracellular signal transduction. Besides, mouse IL1R1 and rat IL1R1 share similarities in amino acid sequence with the identity of 85.6%. Thus, a binding ELISA assay was constructed to detect the association of recombinant mouse IL1RA with recombinant rat IL1R1. Briefly, IL1RA were diluted serially in PBS with 0.1% BSA (pH 7.4). Duplicate samples of 100 µl were then transferred to IL1R1-coated microtiter wells and incubated for 2h at 37°C. Wells were washed with PBST and incubated for 1h with anti-IL1RA pAb, then aspirated and washed 3 times. After incubation with HRP labelled secondary antibody, wells were aspirated and washed 3 times. With the addition of substrate solution, wells were incubated 15-25 minutes at 37°C. Finally, add 50 µl stop solution to the wells and read at 450nm immediately. The binding activity of IL1RA with IL1R1 was in a dose dependent manner.

**Observed MW (kDa)** 20 kDa.

## Properties

**Form** Lyophilized powder

**Buffer** Reconstitute with 20mM Tris and 150mM NaCl to 0.1-1.0mg/ml. Do not vortex. Lyophilized from 20mM Tris, 150mM NaCl, 1mM EDTA, 1mM DTT, 0.01% SKL, 5% Trehalose.

**Preservative** ProClin 300

**Storage** For short-term storage (1-2 weeks), store at 4°C. For long-term storage, store at -20°C or below. After reconstitution, keep as concentrated solution. Avoid freeze-thaw cycles.

**Region/Sequence** N-terminal His-Tag; Arg27~Gln178 (NP\_001034790.1)

**Expression System** E. coli

**Purity** > 95%

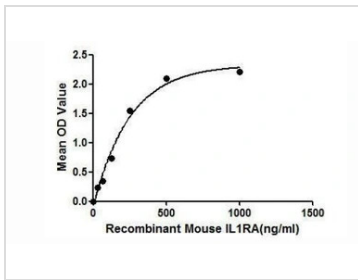
**Endotoxin** < 1 EU/µg

**Conjugation** Unconjugated

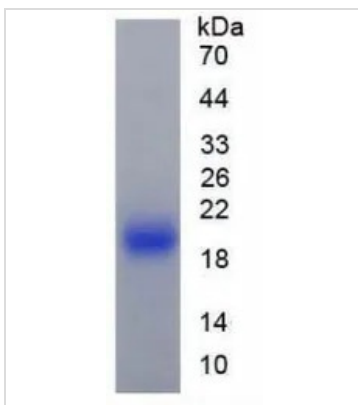
**Note** For laboratory use only. Not for any clinical, therapeutic, or diagnostic use in humans or animals. Not for animal or human consumption.



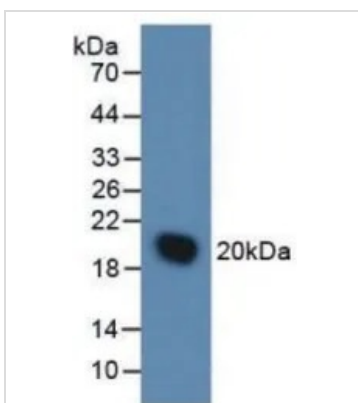
For full product information, images and publications, please visit our [website](#).

**DATA IMAGES**

**GTX00289-pro Functional Assay Image**

Functional ELISA analysis of GTX00289-pro Mouse IL1 Receptor antagonist protein which can bind immobilized IL1R1 protein.


**GTX00289-pro Image**

SDS-PAGE analysis of GTX00289-pro Mouse IL1 Receptor antagonist protein.


**GTX00289-pro Image**

WB analysis of GTX00289-pro Mouse IL1 Receptor antagonist protein.



For full product information, images and publications, please visit our [website](https://www.genetex.com).