

## Mouse IL2 Receptor beta protein, His tag

Cat. No. GTX00290-pro

**Applications** Functional Assay**Species** Mouse**Package**

10 µg

## Applications

## Application Note

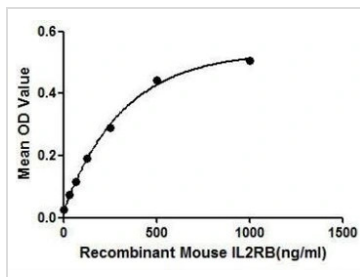
IL2RB (interleukin-2 receptor subunit beta) is a heterotrimeric protein expressed on the surface of certain immune cells, such as lymphocytes, which binds and responds to a cytokine called IL-2. Thus we have conducted a binding ELISA assay to detect the interaction of recombinant mouse IL2RB with recombinant mouse IL2. Briefly, IL2RB were diluted serially in PBS, with 0.01% BSA (pH 7.4). Duplicate samples of 100 µl were then transferred to IL2-coated microtiter wells and incubated for 2h at 37°C. Wells were washed with PBST and incubated for 1h with anti-IL2RB pAb, then aspirated and washed 3 times. After incubation with HRP labelled secondary antibody, wells were aspirated and washed 3 times. With the addition of substrate solution, wells were incubated 15-25 minutes at 37°C. Finally, add 50 µl stop solution to the wells and read at 450nm immediately. The binding activity of IL2RB with IL2 was in a dose dependent manner.

**Observed MW (kDa)** 27 kDa.

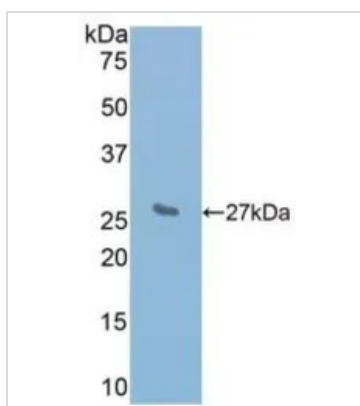
## Properties

**Form** Lyophilized powder**Buffer** Reconstitute with 20mM Tris and 150mM NaCl to 0.1-1.0mg/ml. Do not vortex. Lyophilized from 20mM Tris, 150mM NaCl, 1mM EDTA, 1mM DTT, 0.01% SKL, 5% Trehalose.**Preservative** ProClin 300**Storage** For short-term storage (1-2 weeks), store at 4°C. For long-term storage, store at -20°C or below. After reconstitution, keep as concentrated solution. Avoid freeze-thaw cycles.**Region/Sequence** N-terminal His-Tag; Ala27~Glu240 (NP\_032394.1)**Expression System** E. coli**Purity** > 90%**Endotoxin** < 1 EU/µg**Conjugation** Unconjugated**Note** For laboratory use only. Not for any clinical, therapeutic, or diagnostic use in humans or animals. Not for animal or human consumption.

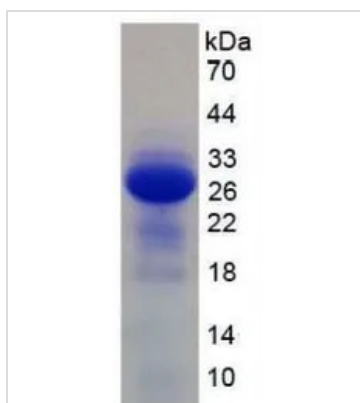
For full product information, images and publications, please visit our [website](#).

**DATA IMAGES**

**GTx00290-pro Functional Assay Image**

Functional ELISA analysis of GTx00290-pro Mouse IL2 Receptor beta protein which can bind immobilized IL2 protein.


**GTx00290-pro Image**

WB analysis of GTx00290-pro Mouse IL2 Receptor beta protein.


**GTx00290-pro Image**

SDS-PAGE analysis of GTx00290-pro Mouse IL2 Receptor beta protein.



For full product information, images and publications, please visit our [website](https://www.genetex.com).