

Mouse IL6 Receptor protein, His tag

Cat. No. GTX00297-pro

Applications Functional Assay**Species** Mouse**Package**

10 µg

Applications

Application Note

IL6R (Interleukin-6 receptor subunit alpha) is part of the receptor for interleukin 6. The interaction of IL6R and IL6 may lead to the regulation of the immune response, acute-phase reactions and hematopoiesis. Thus, a binding ELISA assay was conducted to detect the association of IL6R with IL6. Briefly, IL6R were diluted serially in PBS with 0.01% BSA (pH 7.4). Duplicate samples of 100 µl were then transferred to IL6-coated microtiter wells and incubated for 2h at 37°C. Wells were washed with PBST and incubated for 1h with anti-IL6R pAb, then aspirated and washed 3 times. After incubation with HRP labelled secondary antibody, wells were aspirated and washed 3 times. With the addition of substrate solution, wells were incubated 15-25 minutes at 37°C. Finally, add 50 µl stop solution to the wells and read at 450nm immediately. The binding activity of IL6R with IL6 was in a dose dependent manner.

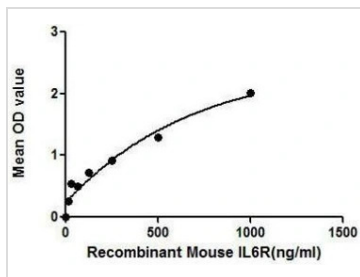
Observed MW (kDa) 18 kDa.

Properties

Form Lyophilized powder**Buffer** Reconstitute with 10mM PBS (pH7.4) to 0.1-1.0mg/ml. Do not vortex. Lyophilized from PBS (pH7.4), 0.01% SKL, 1mM DTT, 5% Trehalose.**Preservative** ProClin 300**Storage** For short-term storage (1-2 weeks), store at 4°C. For long-term storage, store at -20°C or below. After reconstitution, keep as concentrated solution. Avoid freeze-thaw cycles.**Region/Sequence** N-terminal His-Tag; Ala52~Ala204 (NP_034689.2)**Expression System** E. coli**Purity** > 97%**Endotoxin** < 1 EU/µg**Conjugation** Unconjugated**Note** For laboratory use only. Not for any clinical, therapeutic, or diagnostic use in humans or animals. Not for animal or human consumption.

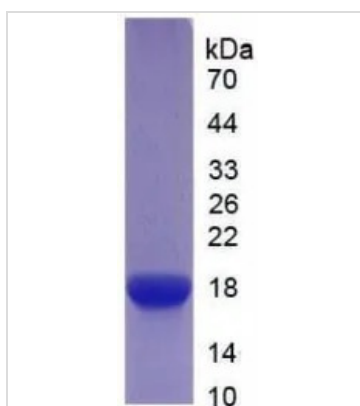
For full product information, images and publications, please visit our [website](#).

DATA IMAGES



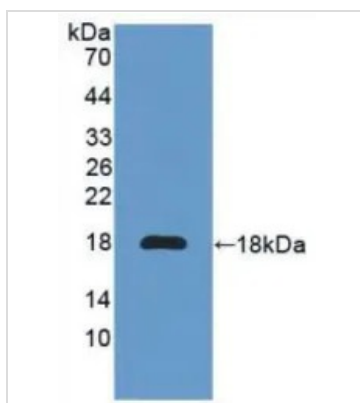
GTx00297-pro Functional Assay Image

Functional ELISA analysis of GTx00297-pro Mouse IL6 Receptor protein which can bind immobilized IL6 protein.



GTx00297-pro Image

SDS-PAGE analysis of GTx00297-pro Mouse IL6 Receptor protein.



GTx00297-pro Image

WB analysis of GTx00297-pro Mouse IL6 Receptor protein.



For full product information, images and publications, please visit our [website](https://www.genetex.com).