

Mouse Wnt5a protein, His tag

Cat. No. GTX00301-pro

Applications Functional Assay**Species** Mouse**Package**

10 µg

Applications

Application Note

Wingless Type MMTV Integration Site Family, Member 5A (WNT5A) is a ligand for members of the frizzled family of seven transmembrane receptors. Can activate or inhibit canonical Wnt signaling, depending on receptor context. Stimulates cell migration. Decreases proliferation, migration, invasiveness and clonogenicity of carcinoma cells and may act as a tumor suppressor. Besides, WNT Inhibitory Factor 1 (WIF1) has been identified as an interactor of WNT5A, thus a binding ELISA assay was conducted to detect the interaction of recombinant mouse WNT5A and recombinant rat WIF1. Briefly, WNT5A were diluted serially in PBS, with 0.01% BSA (pH 7.4). Duplicate samples of 100 µl were then transferred to WIF1-coated microtiter wells and incubated for 2h at 37°C. Wells were washed with PBST and incubated for 1h with anti-WNT5A pAb, then aspirated and washed 3 times. After incubation with HRP labelled secondary antibody, wells were aspirated and washed 3 times. With the addition of substrate solution, wells were incubated 15-25 minutes at 37°C. Finally, add 50 µl stop solution to the wells and read at 450nm immediately. The binding activity of WNT5A and WIF1 was in a dose dependent manner.

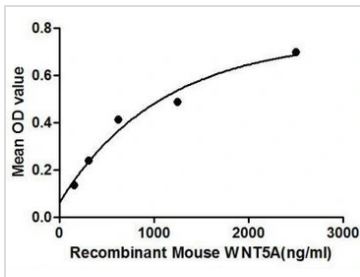
Observed MW (kDa) 62 kDa.

Properties

Form Lyophilized powder**Buffer** Reconstitute with 20mM Tris and 150mM NaCl to 0.1-1.0mg/ml. Do not vortex. Lyophilized from 20mM Tris, 150mM NaCl, 1mM EDTA, 1mM DTT, 0.01% SKL, 5% Trehalose.**Preservative** ProClin 300**Storage** For short-term storage (1-2 weeks), store at 4°C. For long-term storage, store at -20°C or below. After reconstitution, keep as concentrated solution. Avoid freeze-thaw cycles.**Region/Sequence** N-terminal His-Tag; Ile62~Lys380 (NP_001243153.1)**Expression System** E. coli**Purity** > 95%**Endotoxin** < 1 EU/µg**Conjugation** Unconjugated**Note** For laboratory use only. Not for any clinical, therapeutic, or diagnostic use in humans or animals. Not for animal or human consumption.

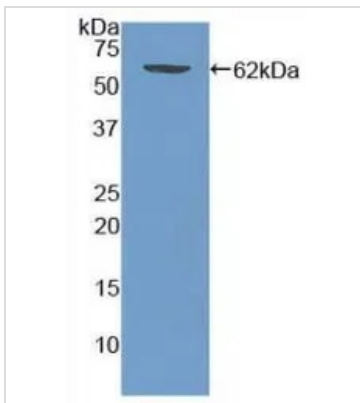
For full product information, images and publications, please visit our [website](#).

DATA IMAGES



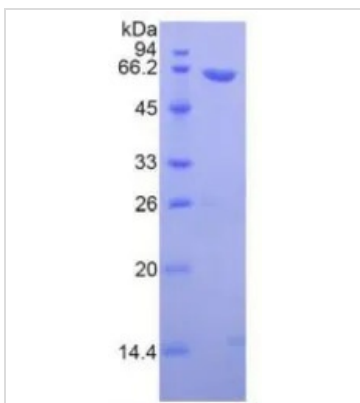
GTX00301-pro Functional Assay Image

Functional ELISA analysis of GTX00301-pro Mouse Wnt5a protein which can bind immobilized WIF1 protein.



GTX00301-pro Image

WB analysis of GTX00301-pro Mouse Wnt5a protein.



GTX00301-pro Image

SDS-PAGE analysis of GTX00301-pro Mouse Wnt5a protein.



For full product information, images and publications, please visit our [website](https://www.genetex.com).