

# Mouse GOLPH2 protein, His and GST tag

**Cat. No. GTX00302-pro**

**Applications** Functional Assay

**Species** Mouse

**Package**

10 µg

## Applications

### Application Note

Golgi Protein 73 (GP73) also known as Golgi phosphoprotein 2 or Golgi membrane protein GP73 is a protein that encoded by the GOLM1 gene. The Golgi complex plays a key role in the sorting and modification of proteins exported from the endoplasmic reticulum. It has been observed to be upregulated in response to viral infection. Besides, Dymedlin (DYM) has been identified as an interactor of GP73, thus a binding ELISA assay was conducted to detect the interaction of recombinant mouse GP73 and recombinant human DYM. Briefly, GP73 were diluted serially in PBS, with 0.01% BSA (pH 7.4). Duplicate samples of 100 µl were then transferred to DYM-coated microtiter wells and incubated for 2h at 37°C. Wells were washed with PBST and incubated for 1h with anti-GP73 pAb, then aspirated and washed 3 times. After incubation with HRP labelled secondary antibody, wells were aspirated and washed 3 times. With the addition of substrate solution, wells were incubated 15-25 minutes at 37°C. Finally, add 50 µl stop solution to the wells and read at 450nm immediately. The binding activity of GP73 and DYM was in a dose dependent manner.

**Observed MW (kDa)** 58 kDa.

## Properties

**Form** Lyophilized powder

**Buffer** Reconstitute with 20mM Tris and 150mM NaCl to 0.1-1.0mg/ml. Do not vortex. Lyophilized from 20mM Tris, 150mM NaCl, 1mM EDTA, 1mM DTT, 0.01% SKL, 5% Trehalose.

**Preservative** ProClin 300

**Storage** For short-term storage (1-2 weeks), store at 4°C. For long-term storage, store at -20°C or below. After reconstitution, keep as concentrated solution. Avoid freeze-thaw cycles.

**Region/Sequence** N-terminal His and GST-Tag; Ser133~Ser379 (NP\_001030294.1)

**Expression System** E. coli

**Purity** > 97%

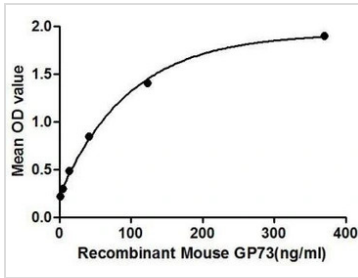
**Endotoxin** < 1 EU/µg

**Conjugation** Unconjugated

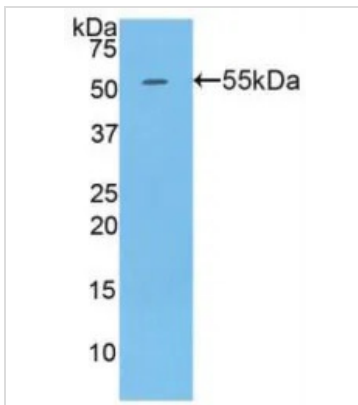
**Note** For laboratory use only. Not for any clinical, therapeutic, or diagnostic use in humans or animals. Not for animal or human consumption.



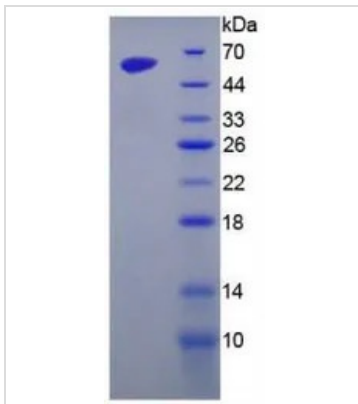
For full product information, images and publications, please visit our [website](#).

**DATA IMAGES**

**GTX00302-pro Functional Assay Image**

Functional ELISA analysis of GTX00302-pro Mouse GOLPH2 protein which can bind immobilized DYM protein.


**GTX00302-pro Image**

WB analysis of GTX00302-pro Mouse GOLPH2 protein.


**GTX00302-pro Image**

SDS-PAGE analysis of GTX00302-pro Mouse GOLPH2 protein.



For full product information, images and publications, please visit our [website](https://www.genetex.com).