

## Mouse SOCS3 protein, His tag

Cat. No. GTX00304-pro

**Applications** Functional Assay**Species** Mouse**Package**

10 µg

## Applications

## Application Note

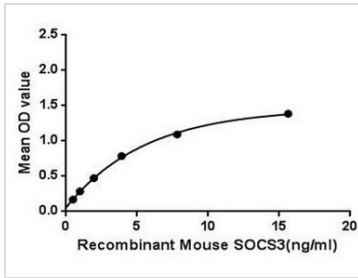
Suppressor of cytokine signaling 3 (SOCS3) is a member of the STAT-induced STAT inhibitor (SSI), also known as suppressor of cytokine signaling (SOCS), family that negatively regulates cytokine signal transduction. SOCS3 is feedback inhibitors of the Janus kinase (JAK) and signal transducer and activator of transcription (STAT) signaling pathway. Inhibits cytokine signal transduction by binding to tyrosine kinase receptors including gp130, LIF, erythropoietin, insulin, IL12, GCSF and leptin receptors. SOCS3 also can bind to JAK2 kinase inhibits its kinase activity and inhibits insulin signaling in adipose tissue and the liver. Besides, Glycoprotein 130 (gp130) has been identified as an interactor of SOCS3, thus a binding ELISA assay was conducted to detect the interaction of recombinant mouse SOCS3 and recombinant mouse gp130. Briefly, SOCS3 were diluted serially in PBS, with 0.01% BSA (pH 7.4). Duplicate samples of 100 µl were then transferred to SOCS3-coated microtiter wells and incubated for 2h at 37°C. Wells were washed with PBST and incubated for 1h with anti-SOCS3 pAb, then aspirated and washed 3 times. After incubation with HRP labelled secondary antibody, wells were aspirated and washed 3 times. With the addition of substrate solution, wells were incubated 15-25 minutes at 37°C. Finally, add 50 µl stop solution to the wells and read at 450nm immediately. The binding activity of SOCS3 and gp130 was in a dose dependent manner.

**Observed MW (kDa)** 26 kDa.

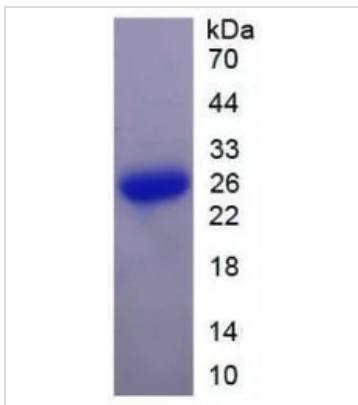
## Properties

**Form** Lyophilized powder**Buffer** Reconstitute with 20mM Tris and 150mM NaCl to 0.1-1.0mg/ml. Do not vortex. Lyophilized from 20mM Tris, 150mM NaCl, 1mM EDTA, 1mM DTT, 0.01% SKL, 5% Trehalose.**Preservative** ProClin 300**Storage** For short-term storage (1-2 weeks), store at 4°C. For long-term storage, store at -20°C or below. After reconstitution, keep as concentrated solution. Avoid freeze-thaw cycles.**Region/Sequence** Full length protein, N-terminal His-Tag; Met1~Leu225 (NP\_031733.1)**Expression System** E. coli**Purity** > 97%**Endotoxin** < 1 EU/µg**Conjugation** Unconjugated**Note** For laboratory use only. Not for any clinical, therapeutic, or diagnostic use in humans or animals. Not for animal or human consumption.

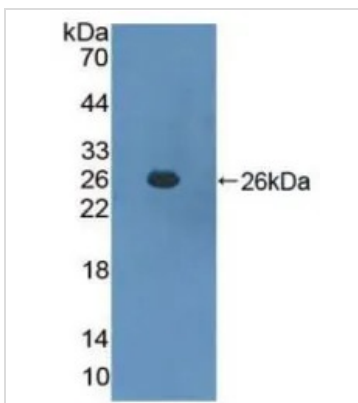
For full product information, images and publications, please visit our [website](#).

**DATA IMAGES**

**GTX00304-pro Functional Assay Image**

Functional ELISA analysis of GTX00304-pro Mouse SOCS3 protein which can bind immobilized gp130 protein.


**GTX00304-pro Image**

SDS-PAGE analysis of GTX00304-pro Mouse SOCS3 protein.


**GTX00304-pro Image**

WB analysis of GTX00304-pro Mouse SOCS3 protein.



For full product information, images and publications, please visit our [website](https://www.genetex.com).