

Mouse Tyrosine Aminotransferase protein, His tag

Cat. No. GTX00309-pro

Applications Functional Assay**Species** Mouse**Package**

10 µg

Applications

Application Note

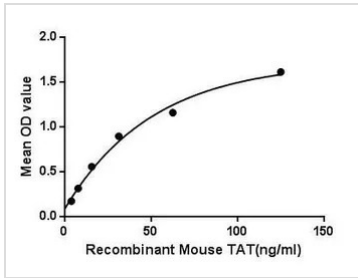
Tyrosine aminotransferase (TAT) is an enzyme present in the liver and catalyzes the conversion of tyrosine to 4-hydroxyphenylpyruvate. In humans, the tyrosine aminotransferase protein is encoded by the TAT gene. A deficiency of the enzyme in humans can result in what is known as Type II Tyrosinemia, wherein there is an abundance of tyrosine as a result of tyrosine failing to undergo an aminotransferase reaction to form 4-hydroxyphenylpyruvate. Besides, Glutamine synthetase (GS) has been identified as an interactor of TAT, thus a binding ELISA assay was conducted to detect the interaction of recombinant mouse TAT and recombinant mouse GS. Briefly, TAT were diluted serially in PBS with 0.01% BSA (pH 7.4). Duplicate samples of 100 µl were then transferred to GS-coated microtiter wells and incubated for 2h at 37°C. Wells were washed with PBST and incubated for 1h with anti-TATpAb, then aspirated and washed 3 times. After incubation with HRP labelled secondary antibody, wells were aspirated and washed 3 times. With the addition of substrate solution, wells were incubated 15-25 minutes at 37°C. Finally, add 50 µl stop solution to the wells and read at 450nm immediately. The binding activity of TAT and GS was in a dose dependent manner.

Observed MW (kDa) 34 kDa.

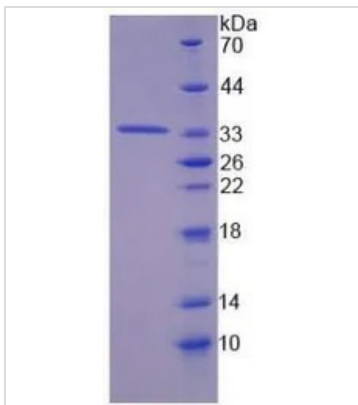
Properties

Form Lyophilized powder**Buffer** Reconstitute with 20mM Tris and 150mM NaCl to 0.1-1.0mg/ml. Do not vortex. Lyophilized from 20mM Tris, 150mM NaCl, 1mM EDTA, 1mM DTT, 0.01% SKL, 5% Trehalose.**Preservative** ProClin 300**Storage** For short-term storage (1-2 weeks), store at 4°C. For long-term storage, store at -20°C or below. After reconstitution, keep as concentrated solution. Avoid freeze-thaw cycles.**Region/Sequence** N-terminal His-Tag; Pro190~Lys454 (NP_666326.1)**Expression System** E. coli**Purity** > 95%**Endotoxin** < 1 EU/µg**Conjugation** Unconjugated**Note** For laboratory use only. Not for any clinical, therapeutic, or diagnostic use in humans or animals. Not for animal or human consumption.

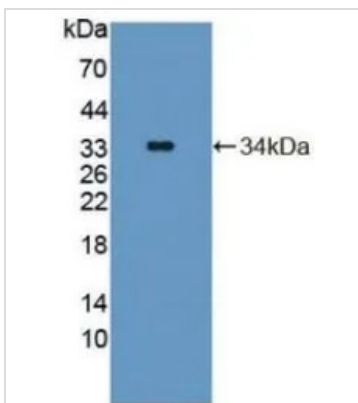
For full product information, images and publications, please visit our [website](#).

DATA IMAGES

GTX00309-pro Functional Assay Image

Functional ELISA analysis of GTX00309-pro Mouse Tyrosine Aminotransferase protein which can bind immobilized GS protein.


GTX00309-pro Image

SDS-PAGE analysis of GTX00309-pro Mouse Tyrosine Aminotransferase protein.


GTX00309-pro Image

WB analysis of GTX00309-pro Mouse Tyrosine Aminotransferase protein.



For full product information, images and publications, please visit our [website](https://www.genetex.com).