

Mouse LIF protein, His tag

Cat. No. GTX00320-pro**Applications** Functional Assay**Species** Mouse**Package**

10 µg

Applications

Application Note

Leukemia inhibitory factor (LIF), is an interleukin 6 class cytokine that affects cell growth by inhibiting differentiation. LIF as a cytokine also has another function including: the growth promotion and cell differentiation of different types of target cells, influence on bone metabolism, cachexia, neural development, embryogenesis and inflammation. Besides, Colony Stimulating Factor Receptor, Granulocyte (GCSFR) has been identified as an interactor of LIF, thus a binding ELISA assay was conducted to detect the interaction of recombinant mouse LIF and recombinant mouse GCSFR. Briefly, LIF were diluted serially in PBS, with 0.01% BSA (pH 7.4). Duplicate samples of 100 µl were then transferred to GCSFR-coated microtiter wells and incubated for 2h at 37°C. Wells were washed with PBST and incubated for 1h with anti-LIF pAb, then aspirated and washed 3 times. After incubation with HRP labelled secondary antibody, wells were aspirated and washed 3 times. With the addition of substrate solution, wells were incubated 15-25 minutes at 37°C. Finally, add 50 µl stop solution to the wells and read at 450nm immediately. The binding activity of LIF and GCSFR was in a dose dependent manner.

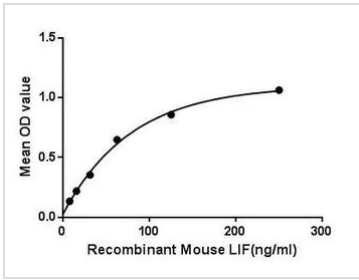
Observed MW (kDa) 21 kDa.

Properties

Form Lyophilized powder**Buffer** Reconstitute with 10mM PBS (pH7.4) to 0.1-1.0mg/ml. Do not vortex. Lyophilized from PBS (pH7.4), 0.01% SKL, 1mM DTT, 5% Trehalose.**Preservative** ProClin 300**Storage** For short-term storage (1-2 weeks), store at 4°C. For long-term storage, store at -20°C or below. After reconstitution, keep as concentrated solution. Avoid freeze-thaw cycles.**Region/Sequence** N-terminal His-Tag; Pro25~Phe203 (NP_001034626.1)**Expression System** E. coli**Purity** > 95%**Endotoxin** < 1 EU/µg**Conjugation** Unconjugated**Note** For laboratory use only. Not for any clinical, therapeutic, or diagnostic use in humans or animals. Not for animal or human consumption.

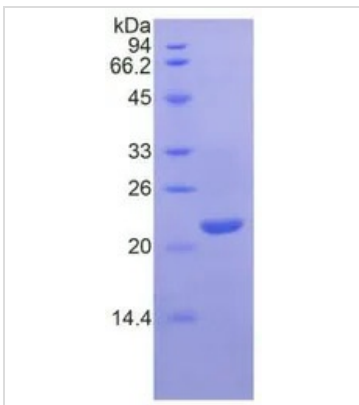
For full product information, images and publications, please visit our [website](#).

DATA IMAGES



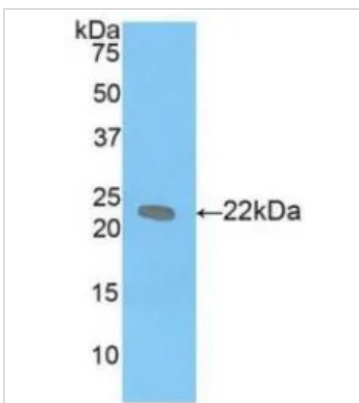
GTX00320-pro Functional Assay Image

Functional ELISA analysis of GTX00320-pro Mouse LIF protein which can bind immobilized GCSFR protein.



GTX00320-pro Image

SDS-PAGE analysis of GTX00320-pro Mouse LIF protein.



GTX00320-pro Image

WB analysis of GTX00320-pro Mouse LIF protein.



For full product information, images and publications, please visit our [website](#).