

Mouse GDNF protein, His tag

Cat. No. GTX00321-pro

Applications Functional Assay**Species** Mouse**Package**

10 µg

Applications

Application Note

Glial cell-derived neurotrophic factor (GDNF) is a small protein that potently promotes the survival of many types of neurons. This protein was shown to promote the survival and differentiation of dopaminergic neurons in culture, and was able to prevent apoptosis of motor neurons induced by axotomy. The most prominent feature of GDNF is its ability to support the survival of dopaminergic and motoneurons. Besides, Glial Cell Line Derived Neurotrophic Factor Receptor Alpha 2 (GFRa2) has been identified as an interactor of GDNF, thus a binding ELISA assay was conducted to detect the interaction of recombinant mouse GDNF and recombinant mouse GFRa2. Briefly, GDNF were diluted serially in PBS, with 0.01% BSA (pH 7.4). Duplicate samples of 100 µl were then transferred to GFRa2-coated microtiter wells and incubated for 2h at 37°C. Wells were washed with PBST and incubated for 1h with anti-GDNF pAb, then aspirated and washed 3 times. After incubation with HRP labelled secondary antibody, wells were aspirated and washed 3 times. With the addition of substrate solution, wells were incubated 15-25 minutes at 37°C. Finally, add 50 µl stop solution to the wells and read at 450nm immediately. The binding activity of GDNF and GFRa2 was in a dose dependent manner.

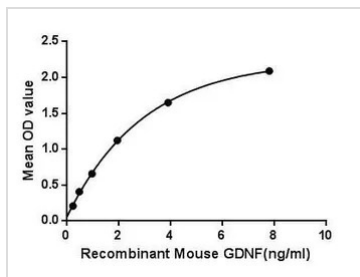
Observed MW (kDa) 19 kDa.

Properties

Form Lyophilized powder**Buffer** Reconstitute with 20mM Tris and 150mM NaCl to 0.1-1.0mg/ml. Do not vortex. Lyophilized from 20mM Tris, 150mM NaCl, 1mM EDTA, 1mM DTT, 0.01% SKL, 5% Trehalose.**Preservative** ProClin 300**Storage** For short-term storage (1-2 weeks), store at 4°C. For long-term storage, store at -20°C or below. After reconstitution, keep as concentrated solution. Avoid freeze-thaw cycles.**Region/Sequence** N-terminal His-Tag; Asp79~Leu217 (NP_001288261.1)**Expression System** E. coli**Purity** > 97%**Endotoxin** < 1 EU/µg**Conjugation** Unconjugated**Note** For laboratory use only. Not for any clinical, therapeutic, or diagnostic use in humans or animals. Not for animal or human consumption.

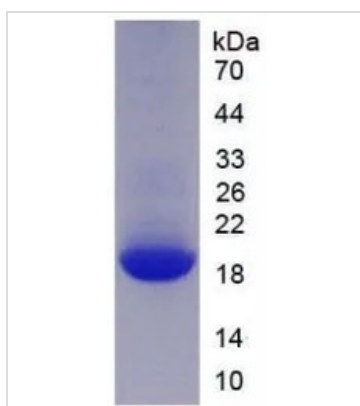
For full product information, images and publications, please visit our [website](#).

DATA IMAGES



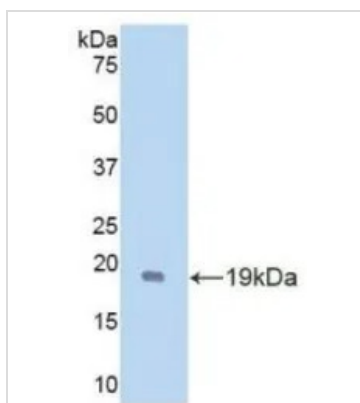
GTX00321-pro Functional Assay Image

Functional ELISA analysis of GTX00321-pro Mouse GDNF protein which can bind immobilized GFRa2 protein.



GTX00321-pro Image

SDS-PAGE analysis of GTX00321-pro Mouse GDNF protein.



GTX00321-pro Image

WB analysis of GTX00321-pro Mouse GDNF protein.



For full product information, images and publications, please visit our [website](https://www.genetex.com).