

## Mouse iNOS protein, His tag

Cat. No. GTX00325-pro

**Applications** Functional Assay**Species** Mouse**Package**

10 µg

## Applications

## Application Note

Nitric oxide synthase 2, inducible (NOS2) is a member of Nitric oxide synthases (NOSs) family. Nitric oxide synthases (NOSs) are a family of enzymes catalyzing the production of nitric oxide (NO) from L-arginine. NO is an important cellular signaling molecule. It helps modulate vascular tone, insulin secretion, airway tone, and peristalsis, and is involved in angiogenesis and neural development. Besides, Ubiquitin Carboxyl Terminal Hydrolase L5 (UCHL5) has been identified as an interactor of NOS2, thus a binding ELISA assay was conducted to detect the interaction of recombinant mouse NOS2 and recombinant mouse UCHL5. Briefly, NOS2 was diluted serially in PBS with 0.01% BSA (pH 7.4). Duplicate samples of 100 µl were then transferred to UCHL5-coated microtiter wells and incubated for 2h at 37°C. Wells were washed with PBST and incubated for 1h with anti-NOS2 pAb, then aspirated and washed 3 times. After incubation with HRP labelled secondary antibody, wells were aspirated and washed 3 times. With the addition of substrate solution, wells were incubated 15-25 minutes at 37°C. Finally, add 50 µl stop solution to the wells and read at 450nm immediately. The binding activity of NOS2 and UCHL5 was in a dose dependent manner.

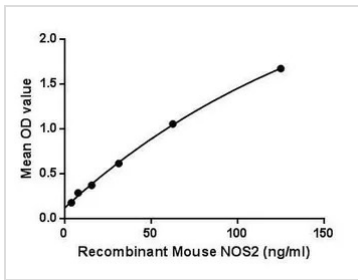
**Observed MW (kDa)** 20 kDa.

## Properties

**Form** Lyophilized powder**Buffer** Reconstitute with 20mM Tris and 150mM NaCl to 0.1-1.0mg/ml. Do not vortex. Lyophilized from 20mM Tris, 150mM NaCl, 1mM EDTA, 1mM DTT, 0.01% SKL, 5% Trehalose.**Preservative** ProClin 300**Storage** For short-term storage (1-2 weeks), store at 4°C. For long-term storage, store at -20°C or below. After reconstitution, keep as concentrated solution. Avoid freeze-thaw cycles.**Region/Sequence** N-terminal His-Tag; Asp43~Thr213 (NP\_001300850.1)**Expression System** E. coli**Purity** > 97%**Endotoxin** < 1 EU/µg**Conjugation** Unconjugated**Note** For laboratory use only. Not for any clinical, therapeutic, or diagnostic use in humans or animals. Not for animal or human consumption.

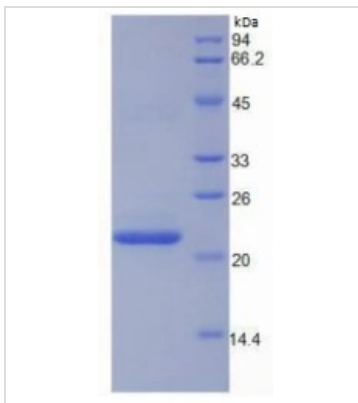
For full product information, images and publications, please visit our [website](#).

## DATA IMAGES



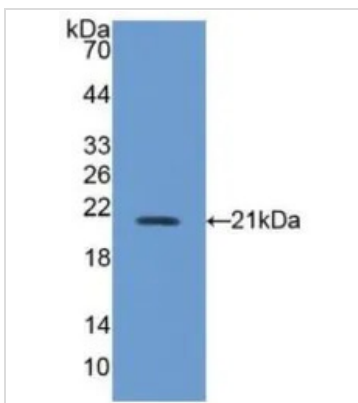
### GTX00325-pro Functional Assay Image

Functional ELISA analysis of GTX00325-pro Mouse iNOS protein which can bind immobilized UCHL5 protein.



### GTX00325-pro Image

SDS-PAGE analysis of GTX00325-pro Mouse iNOS protein.



### GTX00325-pro Image

WB analysis of GTX00325-pro Mouse iNOS protein.



For full product information, images and publications, please visit our [website](https://www.genetex.com).