

## Mouse SFTPC protein, His tag

Cat. No. GTX00326-pro

**Applications** Functional Assay**Species** Mouse**Package**

10 µg

## Applications

## Application Note

Surfactant associated proteins (SPC), is one of the pulmonary surfactant proteins. It is a membrane protein which manufactures surfactant. The propeptide of pulmonary surfactant C has an N-terminal alpha-helical segment whose suggested function was stabilization of the protein structure, since the latter can irreversibly transform from its native alpha-helical structure to beta-sheet aggregates and form amyloid fibrils. Besides, Eukaryotic Translation Initiation Factor 2 Alpha Kinase 3 (EIF2aK3) has been identified as an interactor of SPC, thus a binding ELISA assay was conducted to detect the interaction of recombinant mouse SPC and recombinant mouse EIF2aK3. Briefly, SPC were diluted serially in PBS with 0.01% BSA (pH 7.4). Duplicate samples of 100 µl were then transferred to EIF2aK3-coated microtiter wells and incubated for 2h at 37°C. Wells were washed with PBST and incubated for 1h with anti-SPC pAb, then aspirated and washed 3 times. After incubation with HRP labelled secondary antibody, wells were aspirated and washed 3 times. With the addition of substrate solution, wells were incubated 15-25 minutes at 37°C. Finally, add 50 µl stop solution to the wells and read at 450nm immediately. The binding activity of SPC and EIF2aK3 was in a dose dependent manner.

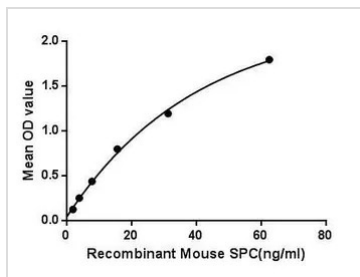
**Observed MW (kDa)** 14 kDa.

## Properties

**Form** Lyophilized powder**Buffer** Reconstitute with 20mM Tris and 150mM NaCl to 0.1-1.0mg/ml. Do not vortex. Lyophilized from 20mM Tris, 150mM NaCl, 1mM EDTA, 1mM DTT, 0.01% SKL, 5% Trehalose.**Preservative** ProClin 300**Storage** For short-term storage (1-2 weeks), store at 4°C. For long-term storage, store at -20°C or below. After reconstitution, keep as concentrated solution. Avoid freeze-thaw cycles.**Region/Sequence** N-terminal His-Tag; Phe94~Ile193**Expression System** E. coli**Purity** > 97%**Endotoxin** < 1 EU/µg**Conjugation** Unconjugated**Note** For laboratory use only. Not for any clinical, therapeutic, or diagnostic use in humans or animals. Not for animal or human consumption.

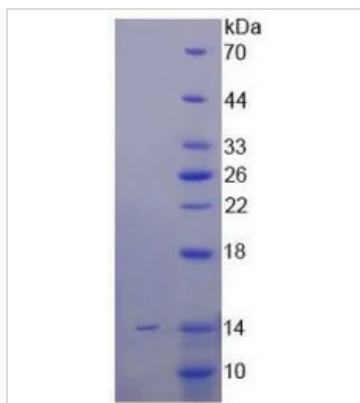
For full product information, images and publications, please visit our [website](#).

## DATA IMAGES



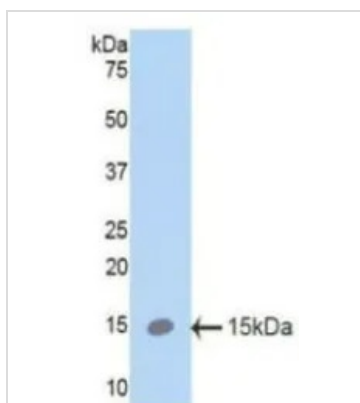
### GTX00326-pro Functional Assay Image

Functional ELISA analysis of GTX00326-pro Mouse SFTPC protein which can bind immobilized EIF2aK3 protein.



### GTX00326-pro Image

SDS-PAGE analysis of GTX00326-pro Mouse SFTPC protein.



### GTX00326-pro Image

WB analysis of GTX00326-pro Mouse SFTPC protein.



For full product information, images and publications, please visit our [website](https://www.genetex.com).