

Mouse Glypican 4 protein, His tag

Cat. No. GTX00330-pro

Applications Functional Assay**Species** Mouse**Package**

10 µg

Applications

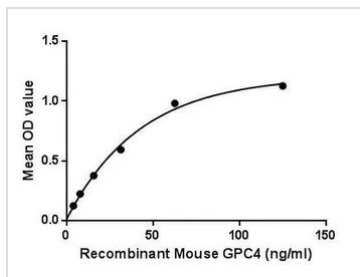
Application Note

Glypican 4 (GPC4) is a cell surface heparan sulfate proteoglycans which composed of a membrane-associated protein core substituted with a variable number of heparan sulfate chains. Members of the glypican-related integral membrane proteoglycan family (GRIPS) contain a core protein anchored to the cytoplasmic membrane via a glycosyl phosphatidylinositol linkage. These proteins may play a role in the control of cell division and growth regulation. Besides, Fibroblast Growth Factor 2, Basic (FGF2) has been identified as an interactor of GPC4, thus a binding ELISA assay was conducted to detect the interaction of recombinant mouse GPC4 and recombinant mouse FGF2. Briefly, GPC4 were diluted serially in PBS, with 0.01% BSA (pH 7.4). Duplicate samples of 100 µl were then transferred to FGF2-coated microtiter wells and incubated for 2h at 37°C. Wells were washed with PBST and incubated for 1h with anti-GPC4 pAb, then aspirated and washed 3 times. After incubation with HRP labelled secondary antibody, wells were aspirated and washed 3 times. With the addition of substrate solution, wells were incubated 15-25 minutes at 37°C. Finally, add 50 µl stop solution to the wells and read at 450nm immediately. The binding activity of GPC4 and FGF2 was in a dose dependent manner.

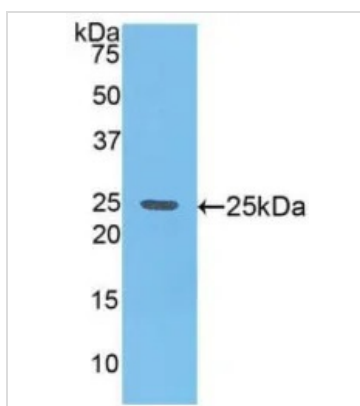
Observed MW (kDa) 27 kDa.

Properties

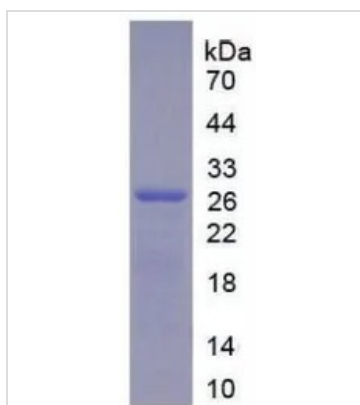
Form Lyophilized powder**Buffer** Reconstitute with 20mM Tris and 150mM NaCl to 0.1-1.0mg/ml. Do not vortex. Lyophilized from 20mM Tris, 150mM NaCl, 1mM EDTA, 1mM DTT, 0.01% SKL, 5% Trehalose.**Preservative** ProClin 300**Storage** For short-term storage (1-2 weeks), store at 4°C. For long-term storage, store at -20°C or below. After reconstitution, keep as concentrated solution. Avoid freeze-thaw cycles.**Region/Sequence** N-terminal His-Tag; Thr220~Gly426 (NP_032176.2)**Expression System** E. coli**Purity** > 97%**Endotoxin** < 1 EU/µg**Conjugation** Unconjugated**Note** For laboratory use only. Not for any clinical, therapeutic, or diagnostic use in humans or animals. Not for animal or human consumption.For full product information, images and publications, please visit our [website](#).

DATA IMAGES

GTX00330-pro Functional Assay Image

Functional ELISA analysis of GTX00330-pro Mouse Glypican 4 protein which can bind immobilized FGF2 protein.


GTX00330-pro Image

WB analysis of GTX00330-pro Mouse Glypican 4 protein.


GTX00330-pro Image

SDS-PAGE analysis of GTX00330-pro Mouse Glypican 4 protein.



For full product information, images and publications, please visit our [website](https://www.genetex.com).