

Mouse Annexin A1 protein, His tag

Cat. No. GTX00335-pro

Applications Functional Assay**Species** Mouse**Package**

10 µg

Applications

Application Note

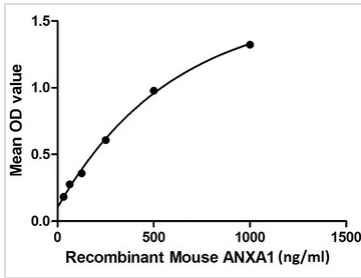
Annexin A1 (ANXA1), also known as lipocortin I, belongs to the annexin family of Ca²⁺-dependent phospholipid-binding proteins that have a molecular weight of approximately 35,000 to 40,000 and are preferentially located on the cytosolic face of the plasma membrane. Annexin A1 protein has an apparent relative molecular mass of 40kDa with phospholipase A2 inhibitory activity. Besides, S100 Calcium Binding Protein A11 (S100A11) has been identified as an interactor of ANXA1, thus a binding ELISA assay was conducted to detect the interaction of recombinant mouse ANXA1 and recombinant mouse S100A11. Briefly, ANXA1 were diluted serially in PBS, with 0.01% BSA (pH 7.4). Duplicate samples of 100 µl were then transferred to S100A11-coated microtiter wells and incubated for 2h at 37°C. Wells were washed with PBST and incubated for 1h with anti-ANXA1 pAb, then aspirated and washed 3 times. After incubation with HRP labelled secondary antibody, wells were aspirated and washed 3 times. With the addition of substrate solution, wells were incubated 15-25 minutes at 37°C. Finally, add 50 µl stop solution to the wells and read at 450nm immediately. The binding activity of ANXA1 and S100A11 was in a dose dependent manner.

Observed MW (kDa) 40 kDa.

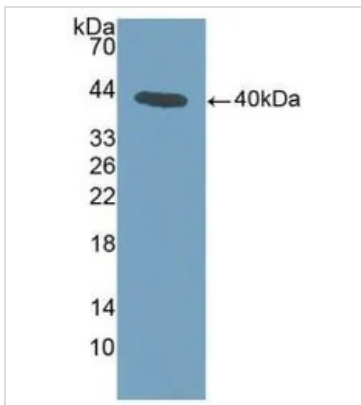
Properties

Form Lyophilized powder**Buffer** Reconstitute with 20mM Tris and 150mM NaCl to 0.1-1.0mg/ml. Do not vortex. Lyophilized from 20mM Tris, 150mM NaCl, 1mM EDTA, 1mM DTT, 0.01% SKL, 5% Trehalose.**Preservative** ProClin 300**Storage** For short-term storage (1-2 weeks), store at 4°C. For long-term storage, store at -20°C or below. After reconstitution, keep as concentrated solution. Avoid freeze-thaw cycles.**Region/Sequence** N-terminal His-Tag; Glu6~Asn346 (NP_034860.2)**Expression System** E. coli**Purity** > 90%**Endotoxin** < 1 EU/µg**Conjugation** Unconjugated**Note** For laboratory use only. Not for any clinical, therapeutic, or diagnostic use in humans or animals. Not for animal or human consumption.For full product information, images and publications, please visit our [website](#).

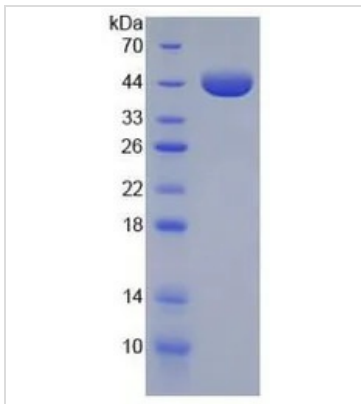
Date 2026 / 01 / 01 Page 1 of 2

DATA IMAGES

GTX00335-pro Functional Assay Image

Functional ELISA analysis of GTX00335-pro Mouse Annexin A1 protein which can bind immobilized S100A11 protein.


GTX00335-pro Image

WB analysis of GTX00335-pro Mouse Annexin A1 protein.


GTX00335-pro Image

SDS-PAGE analysis of GTX00335-pro Mouse Annexin A1 protein.



For full product information, images and publications, please visit our [website](https://www.genetex.com).