

Pig IL6 protein, His tag (active)

Cat. No. GTX00338-pro

Application	Functional Assay
Species	Pig

Package
10 µg

APPLICATION

Application Note

Interleukin 6 (IL-6) is an interleukin that acts as both a pro-inflammatory cytokine and an anti-inflammatory myokine. Interleukin 6 is secreted by T cells and macrophages to stimulate immune response and also plays a role in fighting infection. It supports the growth of B cells and is antagonistic to regulatory T cells. To test the effect of IL6 on cell proliferation, Raji cells were seeded into triplicate wells of 96-well plates at a density of 5000 cells/well with 1% serum standard RPMI-1640 which contains various concentrations of recombinant pig IL6. After incubated for 5 days, cells were observed by inverted microscope and cell proliferation was measured by Cell Counting Kit-8 (CCK-8). Briefly, 10 µl of CCK-8 solution was added to each well of the plate, then the absorbance at 450nm was measured using a microplate reader after incubating the plate for 1-4 hours at 37°C. Proliferation of Raji cells after incubation with IL6 for 5 days observed by inverted microscope.

Observed MW 26 kDa.

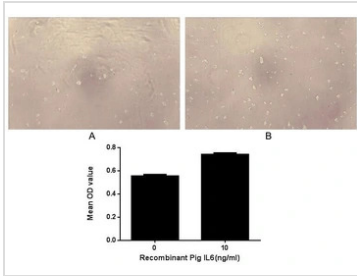
PROPERTIES

Form	Lyophilized powder
Buffer	Reconstitute with 20mM Tris and 150mM NaCl to 0.1-1.0mg/ml. Do not vortex. Lyophilized from 20mM Tris, 150mM NaCl, 1mM EDTA, 1mM DTT, 0.01% SKL, 5% Trehalose.
Preservative	ProClin 300
Storage	For short-term storage (1-2 weeks), store at 4°C. For long-term storage, store at -20°C or below. After reconstitution, keep as concentrated solution. Avoid freeze-thaw cycles.
Region/Sequence	N-terminal His-Tag; Pro29~Met212 (NP_001239358.1)
Expression System	E. coli
Purity	> 95%
Endotoxin	< 1 EU/µg
Conjugation	Unconjugated
Note	For laboratory use only. Not for any clinical, therapeutic, or diagnostic use in humans or animals. Not for animal or human consumption.



For full product information, images and publications, please visit our [website](#).

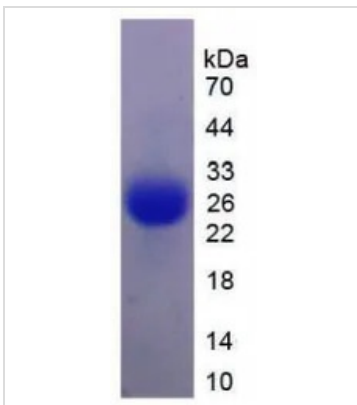
Date 2024 / 05 / 18 Page 1 of 2

DATA IMAGES

GTX00338-pro Functional Assay Image

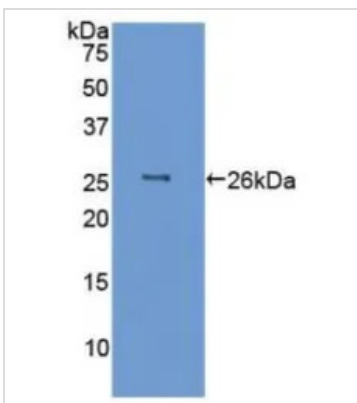
Cell proliferation effect of GTX00338-pro Pig IL6 protein (active). Cell viability was measured by Cell Counting Kit-8 (CCK-8).

(A) Unstimulated Raji cells cultured in RPMI-1640 for 5 days.

(B) Raji cells cultured in RPMI-1640, stimulated with 10 ng/ml IL6 for 5 days.


GTX00338-pro Image

SDS-PAGE analysis of GTX00338-pro Pig IL6 protein (active).


GTX00338-pro Image

WB analysis of GTX00338-pro Pig IL6 protein (active).



For full product information, images and publications, please visit our [website](https://www.genetex.com).