

Rabbit CXCL8 / IL8 protein, His tag (active)

Cat. No. GTX00339-pro

Applications Functional Assay**Species** Rabbit**Package**

10 µg

Applications

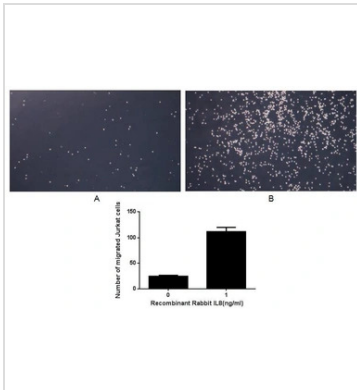
Application Note

Interleukin 8 (IL8 or chemokine (C-X-C motif) ligand 8, CXCL8) is a chemokine produced by macrophages and other cell types such as epithelial cells, airway smooth muscle cells and endothelial cells. Thus, chemotaxis assay used 24-well microchemotaxis system was undertaken to detect the chemotactic effect of IL8 on the human T-lymphocyte leukemia cell line Jurkat. Briefly, Jurkat cells were seeded into the upper chambers (100 µl cell suspension, 10⁶ cells/ml in RPMI-1640 with FBS free) and IL8 (0.1 ng/ml, 1 ng/ml and 10 ng/ml diluted separately in serum free RPMI-1640) was added in lower chamber with a polycarbonate filter (8µm pore size) used to separate the two compartments. After incubation at 37°C with 5% CO₂ for 1h, the filter was removed, then cells in low chamber were observed by inverted microscope at low magnification (×100) and the number of migrated cells were counted at high magnification (×400) randomly (five fields for each filter). The migrated Jurkat cells in low chamber at low magnification (×100) randomly, and the migrated cells were counted at high magnification (×400). IL8 is able to induce migration of Jurkat cells, and the optimum chemotaxis of IL8 occurs at 1~10 ng/ml.

Observed MW (kDa) 14 kDa.

Properties

Form Lyophilized powder**Buffer** Reconstitute with 20mM Tris and 150mM NaCl to 0.1-1.0mg/ml. Do not vortex. Lyophilized from 20mM Tris, 150mM NaCl, 1mM EDTA, 1mM DTT, 0.01% SKL, 5% Trehalose.**Preservative** ProClin 300**Storage** For short-term storage (1-2 weeks), store at 4°C. For long-term storage, store at -20°C or below. After reconstitution, keep as concentrated solution. Avoid freeze-thaw cycles.**Region/Sequence** N-terminal His-Tag; Ala23~Ser101 (NP_001075762.1)**Expression System** E. coli**Purity** > 95%**Endotoxin** < 1 EU/µg**Conjugation** Unconjugated**Note** For laboratory use only. Not for any clinical, therapeutic, or diagnostic use in humans or animals. Not for animal or human consumption.For full product information, images and publications, please visit our [website](#).

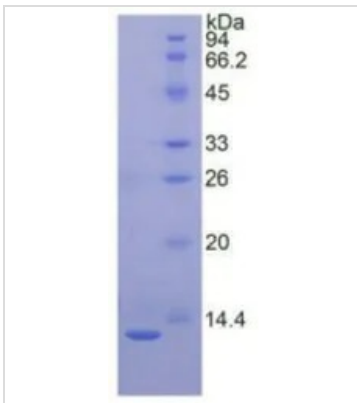
DATA IMAGES

GTX00339-pro Functional Assay Image

The chemotactic effect of GTX00339-pro Rabbit CXCL8 / IL8 protein (active).

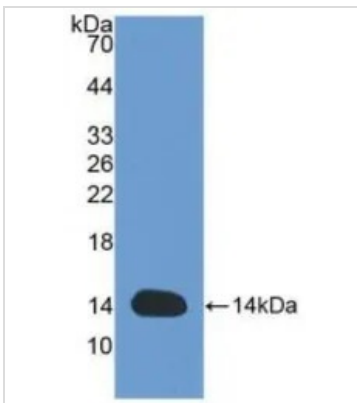
Upper: (A) Jurkat cells were seeded into the upper chambers and serum free RPMI-1640 without IL8 was added in lower chamber, then cells in lower chamber were observed at low magnification ($\times 100$) after incubation for 1hr.

(B) Jurkat cells were seeded into the upper chambers and serum free RPMI-1640 with 1 ng/ml IL8 was added in lower chamber, then cells in lower chamber were observed at low magnification ($\times 100$) after incubation for 1hr.

Lower: The number of migrated cells were counted at high magnification ($\times 400$) randomly (five fields for each filter).


GTX00339-pro Image

SDS-PAGE analysis of GTX00339-pro Rabbit CXCL8 / IL8 protein (active).


GTX00339-pro Image

WB analysis of GTX00339-pro Rabbit CXCL8 / IL8 protein (active).



For full product information, images and publications, please visit our [website](https://www.genetex.com).