

## Rat S100 beta protein, His tag

Cat. No. GTX00346-pro

**Applications** Functional Assay**Species** Rat**Package**

10 µg

## Applications

## Application Note

Protein S100B is a member of the S100 family. S100 proteins are EF-hand calcium-binding proteins and involved in the regulation of a number of cellular processes such as cell cycle progression and differentiation. Experimental results suggest that the receptor for advanced glycation end products (RAGE) plays important roles in mediating S100 protein-induced cellular signaling. Besides, rat RAGE shares similarities with human RAGE in amino acids sequence with the identity of 80.0%. Thus a binding ELISA assay was conducted to detect the interaction of recombinant rat S100B and recombinant human RAGE. Briefly, S100B were diluted serially in PBS, with 0.01% BSA (pH 7.4). Duplicate samples of 100 µl were then transferred to RAGE-coated microtiter wells and incubated for 2h at 37°C. Wells were washed with PBST and incubated for 1h with anti-S100B mAb, then aspirated and washed 3 times. After incubation with HRP labelled secondary antibody, wells were aspirated and washed 3 times. With the addition of substrate solution, wells were incubated 15-25 minutes at 37°C. Finally, add 50 µl stop solution to the wells and read at 450nm immediately. The binding activity of S100B and RAGE was in a dose dependent manner.

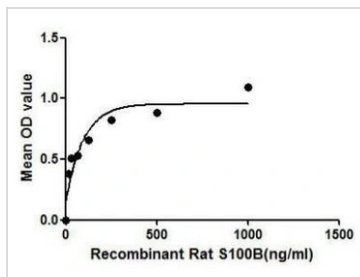
**Observed MW (kDa)** 12 kDa.

## Properties

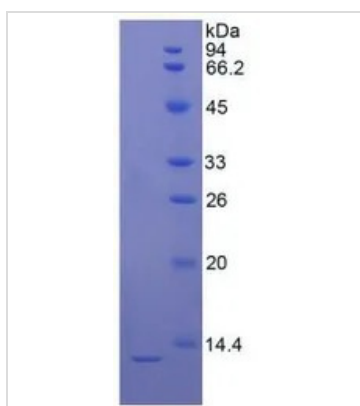
**Form** Lyophilized powder**Buffer** Reconstitute with 20mM Tris and 150mM NaCl to 0.1-1.0mg/ml. Do not vortex. Lyophilized from 20mM Tris, 150mM NaCl, 1mM EDTA, 1mM DTT, 0.01% SKL, 5% Trehalose.**Preservative** ProClin 300**Storage** For short-term storage (1-2 weeks), store at 4°C. For long-term storage, store at -20°C or below. After reconstitution, keep as concentrated solution. Avoid freeze-thaw cycles.**Region/Sequence** Full length protein, N-terminal His-Tag; MSELEKAEF+Met1~Glu92 (NP\_037323.1)**Expression System** E. coli**Purity** > 95%**Endotoxin** < 1 EU/µg**Conjugation** Unconjugated**Note** For laboratory use only. Not for any clinical, therapeutic, or diagnostic use in humans or animals. Not for animal or human consumption.

For full product information, images and publications, please visit our [website](#).

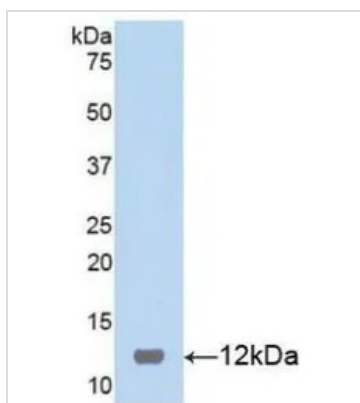
Date 2026 / 01 / 01 Page 1 of 2

**DATA IMAGES**

**GTX00346-pro Functional Assay Image**

Functional ELISA analysis of GTX00346-pro Rat S100 beta protein which can bind immobilized RAGE protein.


**GTX00346-pro Image**

SDS-PAGE analysis of GTX00346-pro Rat S100 beta protein.


**GTX00346-pro Image**

WB analysis of GTX00346-pro Rat S100 beta protein.



For full product information, images and publications, please visit our [website](https://www.genetex.com).