

Rat CXCL2 / GRO beta protein, His and GST tag

Cat. No. GTX00351-pro**Applications** Functional Assay**Species** Rat**Package**

10 µg

Applications

Application Note

Growth Regulated Oncogene Beta (GROβ) is a small cytokine belonging to the CXC chemokine family which produced by activated monocytes and neutrophils and expressed at sites of inflammation. Hematopoietic chemokine, which, in vitro, suppresses hematopoietic progenitor cell proliferation. Besides, Dipeptidyl Peptidase IV (DPP4) has been identified as an interactor of GROβ, thus a binding ELISA assay was conducted to detect the interaction of recombinant rat GROβ and recombinant rat DPP4. Briefly, GROβ were diluted serially in PBS, with 0.01% BSA (pH 7.4). Duplicate samples of 100 µl were then transferred to DPP4-coated microtiter wells and incubated for 2h at 37°C. Wells were washed with PBST and incubated for 1h with anti-GROβ pAb, then aspirated and washed 3 times. After incubation with HRP labelled secondary antibody, wells were aspirated and washed 3 times. With the addition of substrate solution, wells were incubated 15-25 minutes at 37°C. Finally, add 50 µl stop solution to the wells and read at 450nm immediately. The binding activity of GROβ and DPP4 was in a dose dependent manner.

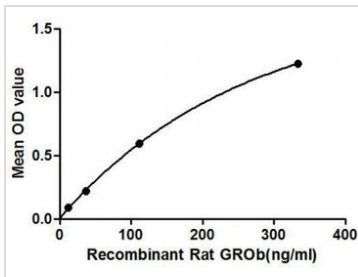
Observed MW (kDa) 41 kDa.

Properties

Form Lyophilized powder**Buffer** Reconstitute with 20mM Tris and 150mM NaCl to 0.1-1.0mg/ml. Do not vortex. Lyophilized from 20mM Tris, 150mM NaCl, 1mM EDTA, 1mM DTT, 0.01% SKL, 5% Trehalose.**Preservative** ProClin 300**Storage** For short-term storage (1-2 weeks), store at 4°C. For long-term storage, store at -20°C or below. After reconstitution, keep as concentrated solution. Avoid freeze-thaw cycles.**Region/Sequence** N-terminal His and GST-Tag; Ser32~Asn100 (NP_446099.1)**Expression System** E. coli**Purity** > 97%**Endotoxin** < 1 EU/µg**Conjugation** Unconjugated**Note** For laboratory use only. Not for any clinical, therapeutic, or diagnostic use in humans or animals. Not for animal or human consumption.

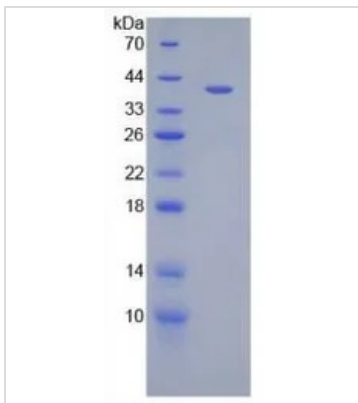
For full product information, images and publications, please visit our [website](#).

DATA IMAGES



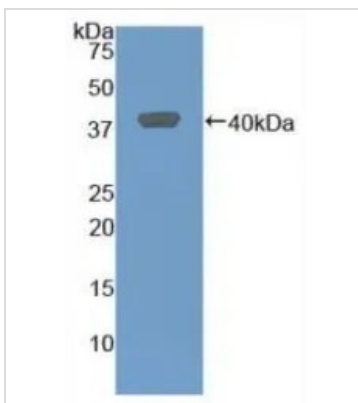
GTx00351-pro Functional Assay Image

Functional ELISA analysis of GTx00351-pro Rat CXCL2 / GRO beta protein which can bind immobilized DPP4 protein.



GTx00351-pro Image

SDS-PAGE analysis of GTx00351-pro Rat CXCL2 / GRO beta protein.



GTx00351-pro Image

WB analysis of GTx00351-pro Rat CXCL2 / GRO beta protein.



For full product information, images and publications, please visit our [website](https://www.genetex.com).