

Rat Plasminogen protein, His tag

Cat. No. GTX00354-pro

Applications Functional Assay**Species** Rat**Package**

10 µg

Applications

Application Note

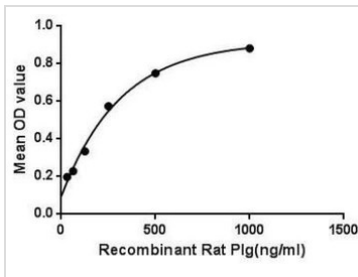
Plasminogen (Plg) can be converted into active plasmin by tissue plasminogen activator (tPA), urokinase plasminogen activator (uPA), kallikrein, and factor XII (Hageman factor). Plasmin can dissolve fibrin blood clots, act on many other processes such as embryonic development, tissue remodeling, inflammation and tumor invasion. Plasmin also can activate collagenases, weakens the walls of the Graafian follicle, cleaves fibrin, fibronectin, thrombospondin, laminin, and von Willebrand factor. Besides, Actin Beta (ACTb) has been identified as an interactor of Plg, thus a binding ELISA assay was conducted to detect the interaction of recombinant rat Plg and recombinant rat ACTb. Briefly, Plg were diluted serially in PBS, with 0.01% BSA (pH 7.4). Duplicate samples of 100 µl were then transferred to ACTb-coated microtiter wells and incubated for 2h at 37°C. Wells were washed with PBST and incubated for 1h with anti-Plg pAb, then aspirated and washed 3 times. After incubation with HRP labelled secondary antibody, wells were aspirated and washed 3 times. With the addition of substrate solution, wells were incubated 15-25 minutes at 37°C. Finally, add 50 µl stop solution to the wells and read at 450nm immediately. The binding activity of Plg and ACTb was in a dose dependent manner.

Observed MW (kDa) 38 kDa.

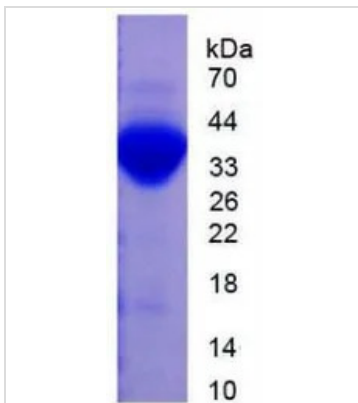
Properties

Form Lyophilized powder**Buffer** Reconstitute with 20mM Tris and 150mM NaCl to 0.1-1.0mg/ml. Do not vortex. Lyophilized from 20mM Tris, 150mM NaCl, 1mM EDTA, 1mM DTT, 0.01% SKL, 5% Trehalose.**Preservative** ProClin 300**Storage** For short-term storage (1-2 weeks), store at 4°C. For long-term storage, store at -20°C or below. After reconstitution, keep as concentrated solution. Avoid freeze-thaw cycles.**Region/Sequence** N-terminal His-Tag; Glu191~Arg433 (NP_445943.1)**Expression System** E. coli**Purity** > 95%**Endotoxin** < 1 EU/µg**Conjugation** Unconjugated**Note** For laboratory use only. Not for any clinical, therapeutic, or diagnostic use in humans or animals. Not for animal or human consumption.

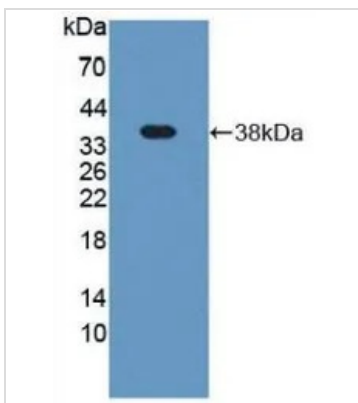
For full product information, images and publications, please visit our [website](#).

DATA IMAGES

GTX00354-pro Functional Assay Image

Functional ELISA analysis of GTX00354-pro Rat Plasminogen protein which can bind immobilized ACT beta protein.


GTX00354-pro Image

SDS-PAGE analysis of GTX00354-pro Rat Plasminogen protein.


GTX00354-pro Image

WB analysis of GTX00354-pro Rat Plasminogen protein.



For full product information, images and publications, please visit our [website](https://www.genetex.com).