

## Rat GSTM1 protein, His tag

Cat. No. GTX00356-pro

**Applications** Functional Assay**Species** Rat**Package**

10 µg

## Applications

## Application Note

Glutathione S-transferase Mu 1 (GSTM1) belongs to the mu class. GSTM1 can detoxifying carcinogens, therapeutic drugs, environmental toxins and products of oxidative stress, by conjugation with glutathione. Besides, uncoupling Protein 1 (UCP1) has been identified as an interactor of GSTM1, thus a binding ELISA assay was conducted to detect the interaction of recombinant rat GSTM1 and recombinant rat UCP1. Briefly, GSTM1 were diluted serially in PBS, with 0.01% BSA (pH 7.4). Duplicate samples of 100 µl were then transferred to UCP1-coated microtiter wells and incubated for 2h at 37°C. Wells were washed with PBST and incubated for 1h with anti-GSTM1 pAb, then aspirated and washed 3 times. After incubation with HRP labelled secondary antibody, wells were aspirated and washed 3 times. With the addition of substrate solution, wells were incubated 15-25 minutes at 37°C. Finally, add 50 µl stop solution to the wells and read at 450nm immediately. The binding activity of of GSTM1 and UCP1 was in a dose dependent manner.

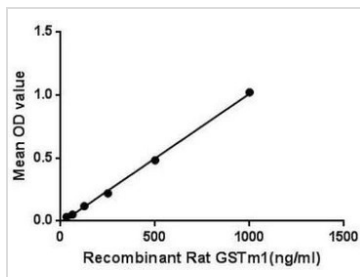
**Observed MW (kDa)** 27 kDa.

## Properties

**Form** Lyophilized powder**Buffer** Reconstitute with 20mM Tris and 150mM NaCl to 0.1-1.0mg/ml. Do not vortex. Lyophilized from 20mM Tris, 150mM NaCl, 1mM EDTA, 1mM DTT, 0.01% SKL, 5% Trehalose.**Preservative** ProClin 300**Storage** For short-term storage (1-2 weeks), store at 4°C. For long-term storage, store at -20°C or below. After reconstitution, keep as concentrated solution. Avoid freeze-thaw cycles.**Region/Sequence** Full length protein, N-terminal His-Tag; Met1~Lys218 (NP\_058710.1)**Expression System** E. coli**Purity** > 95%**Endotoxin** < 1 EU/µg**Conjugation** Unconjugated**Note** For laboratory use only. Not for any clinical, therapeutic, or diagnostic use in humans or animals. Not for animal or human consumption.

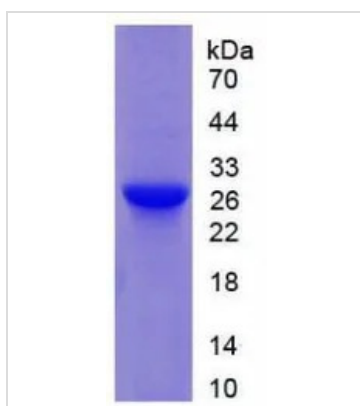
For full product information, images and publications, please visit our [website](#).

## DATA IMAGES



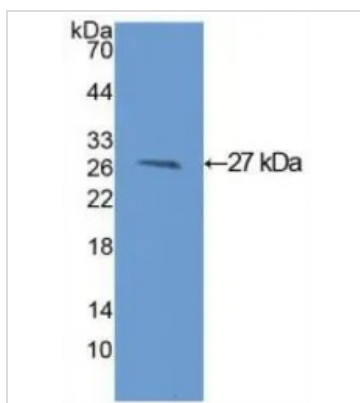
### GTX00356-pro Functional Assay Image

Functional ELISA analysis of GTX00356-pro Rat GSTM1 protein which can bind immobilized UCP1 protein.



### GTX00356-pro Image

SDS-PAGE analysis of GTX00356-pro Rat GSTM1 protein.



### GTX00356-pro Image

WB analysis of GTX00356-pro Rat GSTM1 protein.



For full product information, images and publications, please visit our [website](https://www.genetex.com).