

Rat Arginase 1 protein, His tag

Cat. No. GTX00359-pro

Applications Functional Assay**Species** Rat**Package**

10 µg

Applications

Application Note

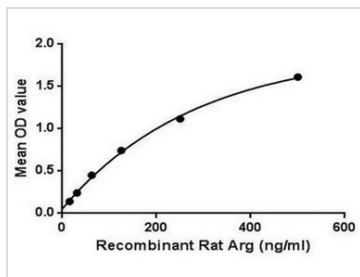
Arginase (Arg) is an enzyme that catalyzes the degradation of arginine to produce urea and ornithine, which is crucial in the urea cycle. In most mammals, two isozymes of this enzyme exist; the first, Arginase I, functions in the urea cycle, and is located primarily in the cytoplasm of the liver. The second isozyme, Arginase II, has been implicated in the regulation of the arginine/ornithine concentrations in the cell. Besides, Estrogen Receptor Alpha (ERα) has been identified as an interactor of, thus a binding ELISA assay was conducted to detect the interaction of recombinant rat Arginase(Arg) and recombinant rat ERα. Briefly, Arg were diluted serially in PBS, with 0.01% BSA (pH 7.4). Duplicate samples of 100 µl were then transferred to ERα-coated microtiter wells and incubated for 2h at 37°C. Wells were washed with PBST and incubated for 1h with anti-Arg pAb, then aspirated and washed 3 times. After incubation with HRP labelled secondary antibody, wells were aspirated and washed 3 times. With the addition of substrate solution, wells were incubated 15-25 minutes at 37°C. Finally, add 50 µl stop solution to the wells and read at 450nm immediately. The binding activity of Arg and ERα was in a dose dependent manner.

Observed MW (kDa) 37 kDa.

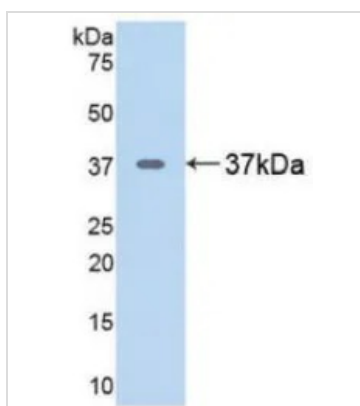
Properties

Form Lyophilized powder**Buffer** Reconstitute with 20mM Tris and 150mM NaCl to 0.1-1.0mg/ml. Do not vortex. Lyophilized from 20mM Tris, 150mM NaCl, 1mM EDTA, 1mM DTT, 0.01% SKL, 5% Trehalose.**Preservative** ProClin 300**Storage** For short-term storage (1-2 weeks), store at 4°C. For long-term storage, store at -20°C or below. After reconstitution, keep as concentrated solution. Avoid freeze-thaw cycles.**Region/Sequence** Full length protein, N-terminal His-Tag; Met1~Lys323 (NP_058830.2)**Expression System** E. coli**Purity** > 97%**Endotoxin** < 1 EU/µg**Conjugation** Unconjugated**Note** For laboratory use only. Not for any clinical, therapeutic, or diagnostic use in humans or animals. Not for animal or human consumption.

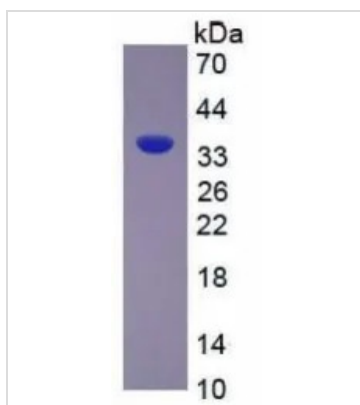
For full product information, images and publications, please visit our [website](#).

DATA IMAGES

GTX00359-pro Functional Assay Image

Functional ELISA analysis of GTX00359-pro Rat Arginase 1 protein which can bind immobilized ER alpha protein.


GTX00359-pro Image

WB analysis of GTX00359-pro Rat Arginase 1 protein.


GTX00359-pro Image

SDS-PAGE analysis of GTX00359-pro Rat Arginase 1 protein.



For full product information, images and publications, please visit our [website](https://www.genetex.com).