

## Rat Galectin 3 protein, His tag (active)

Cat. No. GTX00361-pro

**Applications** Functional Assay**Species** Rat**Package**

10 µg

## Applications

## Application Note

Galectin 3 (GAL3) is a member of the lectin family, of which 14 mammalian galectins have been identified. It is also a member of the beta-galactoside-binding protein family that plays an important role in cell-cell adhesion, cell-matrix interactions, macrophage activation, angiogenesis, metastasis, apoptosis. The protein also has been demonstrated to be involved in cancer, inflammation and fibrosis, heart disease, and stroke. GAL3 is expressed in the nucleus, cytoplasm, mitochondrion, cell surface, and extracellular space. It also can agglutinate red blood. In this case, we choose rabbit erythrocyte (RaE) to assay its ability of agglutination. A general procedure for hemagglutination assay (HA) is as follows, two-fold dilute the recombinant rat GAL3 with 0.01M PBS (pH 7.4), add 50 µl a serial dilution of GAL3 to each well of a U or V-bottom shaped 96-well microtiter plate. The final well serves as a negative control with no GAL3, replace with 50 µl 0.01M PBS. Then add 50 µl 1% RaE to each well and mixed gently. The plate is incubated for 1-2 hours at room temperature. The minimal effective concentration of GAL3 is 2.5 µg/ml.

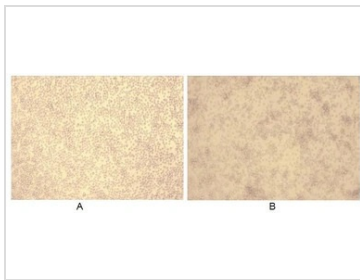
**Observed MW (kDa)** 28 kDa.

## Properties

**Form** Lyophilized powder**Buffer** Reconstitute with 20mM Tris and 150mM NaCl to 0.1-1.0mg/ml. Do not vortex. Lyophilized from 20mM Tris, 150mM NaCl, 1mM EDTA, 1mM DTT, 0.01% SKL, 5% Trehalose.**Preservative** ProClin 300**Storage** For short-term storage (1-2 weeks), store at 4°C. For long-term storage, store at -20°C or below. After reconstitution, keep as concentrated solution. Avoid freeze-thaw cycles.**Region/Sequence** Full length protein, N-terminal His-Tag; Met1~Ile262 (NP\_114020.1)**Expression System** E. coli**Purity** > 90%**Endotoxin** < 1 EU/µg**Conjugation** Unconjugated**Note** For laboratory use only. Not for any clinical, therapeutic, or diagnostic use in humans or animals. Not for animal or human consumption.

For full product information, images and publications, please visit our [website](#).

## DATA IMAGES

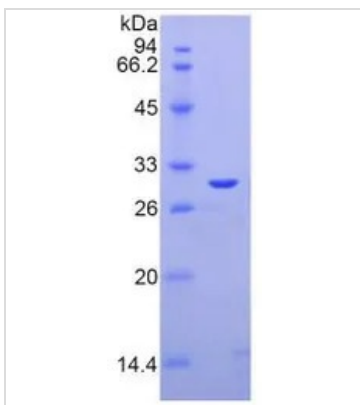


### GTX00361-pro Functional Assay Image

The hemagglutination effect of GTX00361-pro Rat Galectin 3 protein (active).

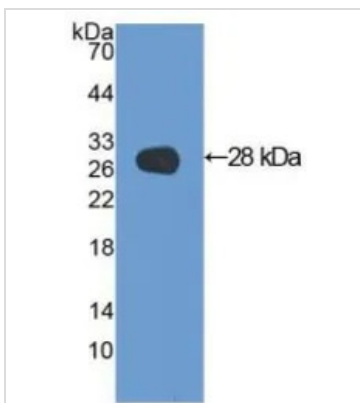
(A) 1% rabbit erythrocyte treated without GAL3.

(B) 1% rabbit erythrocyte treated with 2.5 µg/ml GAL3 for 2hrs.



### GTX00361-pro Image

SDS-PAGE analysis of GTX00361-pro Rat Galectin 3 protein (active).



### GTX00361-pro Image

WB analysis of GTX00361-pro Rat Galectin 3 protein (active).



For full product information, images and publications, please visit our [website](https://www.genetex.com).